

Date: May 15, 2008

To: All Planholders of Record

Re: Addendum No. 1
Lucas Area Water and Street Improvements
City of Palmer, Alaska

This addendum consists of two (2) pages including this sheet plus three (3) attachments. Attachments are as follows:

1. Bid Schedule (9 pages)
2. Sheet C6.01
3. Sheet C6.03

Bid Opening date and time remain unchanged.

Bidders must acknowledge the receipt of this addendum in writing on the Bid Proposal. This addendum amends and/or supplements the contract documents. Contract document provisions not specifically amended herein remain in full force and effect.

Bidders are requested but not required to acknowledge the receipt of this addendum by completing the following, and returning this sheet by facsimile to (907) 746-5231. No additional cover is required.

Firm Name: _____

Name of Acknowledger: _____

Date: _____

Scott Hattenburg, PE

Lorie Dilley, PE/CPG

Dennis Linnell, PE

David Lundin, PE

BIDDING AND CONTRACT DOCUMENTS

A. Modifications to Division XIII BID PROPOSAL

1. Pages BP-2 through BP-10: *DELETE Bid Proposal pages BP-2 through BP-10 and substitute the attached pages BP-2 through BP-10, which revise the estimated quantity of several bid items.*

PLANS

B. Modifications to Division XIV PLANS

1. Sheet C2.11: *DELETE Note D and SUBSTITUTE the following Note D:*

See Intersection Grading & Curb Layout Sheets for detailed grading and layout information.
2. Sheet C6.01: *DELETE the entire sheet and SUBSTITUTE the attached Sheet C6.01, which modifies the driveway demolition limits.*
3. Sheet C6.03: *ADD the following to the end of Note 1:*

Existing pavement thickness is estimated to be an average of 3".
4. Sheet C6.05: *DELETE the entire sheet and SUBSTITUTE the attached Sheet C6.05, which modifies the driveway replacement.*
5. Sheet C6.08: *DELETE point #6 in Curb Layout Table and in the drawing on the lower half of the sheet (E. Fireweed Avenue at the railroad crossing).*

END OF ADDENDUM NO. 1

**CITY OF PALMER
LUCAS AREA WATER AND STREET IMPROVEMENTS
BID PROPOSAL**

SUMMARY

Schedule	Bid Amount
Schedule A - Base Bid - Lucas Area Water and Street Improvements	
Schedule B - Add. Alt. 1 - Street Rehabilitation	

TOTAL BID _____

**CITY OF PALMER
LUCAS AREA WATER AND STREET IMPROVEMENTS
BID PROPOSAL**

SCHEDULE A - BASE BID - Lucas Area Water and Street Improvements

Item No.	Spec. No.	Work Description	Estimated Quantity	Unit Price	Total Bid Price
A-1	20.03	Clearing Per Lump Sum	1 Job		
A-2	20.04	Unclassified Excavation Per Cubic Yard	16,000		
A-3	20.05	Type II Classified Fill and Backfill Per Ton	30,500		
A-4	20.05	Type II-A Classified Fill and Backfill Per Ton	7,500		
A-5	20.06	Leveling Course Per Ton	5,900		
A-6	20.07	Trench Excavation and Backfill (various depths for storm drain piping) Per Linear Foot	865		
A-7	20.07	Trench Excavation and Backfill (various depths for water main) Per Linear Foot	3,605		
A-8	20.07	Rock Excavation and Backfill Per Cubic Yard	1,700		
A-9	20.17	Remove Existing Sidewalk or Concrete Apron Per Square Yard	883		
A-10	20.18	Remove Existing Curb and Gutter Per Linear Foot	2,554		
A-11	20.19	Remove Existing Pavement Per Square Yard	10,606		
A-12	20.19	Remove Existing Leveling Course Per Square Yard	8,300		
A-13	20.22	Geotextile (Separation) Per Square Yard	11,391		
A-14	30.02	P.C.C. Curb and Gutter, Type 1,3,4 Per Linear Foot	6,137		
A-15	30.02	P.C.C. Curb and Gutter, Type 2 Per Linear Foot	1,964		

**CITY OF PALMER
LUCAS AREA WATER AND STREET IMPROVEMENTS
BID PROPOSAL**

SCHEDULE A - BASE BID - Lucas Area Water and Street Improvements

Item No.	Spec. No.	Work Description	Estimated Quantity	Unit Price	Total Bid Price
A-16	30.03	P.C.C. Sidewalk 4" thick Per Square Yard	6,560		
A-17	30.03	P.C.C. Sidewalk 6" thick Per Square Yard	570		
A-18	30.07	P.C.C. Curb Ramp (With Detectable Warning Tile) Per Each	30		
A-19	40.02	A.C. Pavement (Class E) Per Ton	2,450		
A-20	50.14	Repair Sewer Service Per Each	3		
A-21	55.02	F&I 12" CMP, round, steel, galvanized Per Linear Foot	368		
A-22	55.02	F&I 18" CMP, round, steel, galvanized Per Linear Foot	431		
A-23	55.02	F&I 24" CMP, round, steel, galvanized Per Linear Foot	66		
A-24	55.04	Construct Type 1 Manhole Per Each	5		
A-25	55.06	Construct Catch Basin Per Each	11		
A-26	55.07	Connect to Existing Storm Drain Manhole Per Each	1		
A-27	60.02	F&I 6-Inch CL 52 DIP Water Main Per Linear Foot	32		
A-28	60.02	F&I 8-Inch CL 52 DIP Water Main Per Linear Foot	20		
A-29	60.02	F&I 10-Inch CL 52 DIP Water Main Per Linear Foot	3,553		
A-30	60.03	F&I 6-Inch Gate Valve, Valve Box and Marker Per Each	6		
A-31	60.03	F&I 8-Inch Gate Valve, Valve Box and Marker Per Each	3		

**CITY OF PALMER
LUCAS AREA WATER AND STREET IMPROVEMENTS
BID PROPOSAL**

SCHEDULE A - BASE BID - Lucas Area Water and Street Improvements

Item No.	Spec. No.	Work Description	Estimated Quantity	Unit Price	Total Bid Price
A-32	60.03	F&I 10-Inch Gate Valve, Valve Box and Marker Per Each	20		
A-33	60.04	F&I Fire Hydrant Assembly (Single Pumper) Per Each	8		
A-34	60.06	F&I 1" Water Service Line Per Each	48		
A-35	60.06	F&I 1 1/2" and 2" Water Service Line Per Each	5		
A-36	60.07	Polyethylene Encasement Per Linear Foot	3,605		
A-37	60.09	Remove Fire Hydrant Assembly Per Each	4		
A-38	60.14	Temporary Water System Complete Per Lump Sum	1 Job		
A-39	60.15	Adjust Existing Fire Hydrant to Finish Grade Per Each	2		
A-40	65.02	Construction Survey Measurement Per Lump Sum	1 Job		
A-41	70.02	Adjust Manhole Cone Per Each	1		
A-42	70.03	Adjust Manhole Ring Per Each	10		
A-43	70.04	Adjust Standard Catch Basin to Finish Grade Per Each	5		
A-44	70.07	Remove Existing Catch Basin Per Each	7		
A-45	70.07	Remove Existing Manhole Per Each	1		
A-46	70.08	Adjust Main Line Valve Box to Finish Grade Per Each	2		

**CITY OF PALMER
LUCAS AREA WATER AND STREET IMPROVEMENTS
BID PROPOSAL**

SCHEDULE A - BASE BID - Lucas Area Water and Street Improvements

Item No.	Spec. No.	Work Description	Estimated Quantity	Unit Price	Total Bid Price
A-47	70.09	Adjust Service Key Box to Finish Grade Per Each	3		
A-48	70.18	Insulation Board, 4" thick, R 4.5 per Inch Per Square Foot	5,509		
A-49	70.19	Traffic Markings, 4-inch, White Per Linear Foot	2,568		
A-50	70.19	Traffic Markings, 4-inch, Yellow Per Linear Foot	9,278		
A-51	70.19	Traffic Markings, 24-inch, White Per Linear Foot	387		
A-52	70.20	Standard Sign Per Square Foot	318		
A-53	70.20	Remove and Salvage Existing Signs Per Each	24		
A-54	70.21	Traffic Maintenance Per Lump Sum	1 Job		
A-55	70.21	Traffic Price Adjustment Per Contingent Sum	1 Job	\$0.00	\$0.00
A-56	70.23	Adjust Telephone Manhole to Finish Grade Per Each	1		
A-57	70.24	Relocate Existing Mailbox Per Each	3		
A-58	70.25	Remove Pipe (Existing Storm Drain) Per Linear Foot	245		
A-59	70.31	Storm Water Pollution Prevention Plan Per Lump Sum	1 Job		
A-60	75.04	Topsoil at 4" depth Per 1,000 square feet	39		
A-61	75.05	Seeding, Schedule A Mix Per 1,000 square feet	39		

**CITY OF PALMER
LUCAS AREA WATER AND STREET IMPROVEMENTS
BID PROPOSAL**

SCHEDULE A - BASE BID - Lucas Area Water and Street Improvements

Item No.	Spec. No.	Work Description	Estimated Quantity	Unit Price	Total Bid Price
A-62	80.02	Trench and Backfill (width and depth as required per plans for electrical) Per Linear Foot	5000		
A-63	80.04	Luminaire Pole Foundation (cast in place or pile) Per Each	21		
A-64	80.04	Load Center Foundation Type 1A Per Each	1		
A-65	80.05	29 FT Slip Base Luminaire Pole Per Each	6		
A-66	80.05	26 FT Slip Base Luminaire Pole Per Each	14		
A-67	80.06	Luminaire Arm 6 FT length Per Each	6		
A-68	80.06	Luminaire Arm 12 FT length Per Each	9		
A-69	80.06	Luminaire Arm 15 FT length Per Each	5		
A-70	80.07	2" Steel Conduit Per Linear Foot	550		
A-71	80.07	3" Steel Conduit Per Linear Foot	150		
A-72	80.07	2" HDPE Conduit Per Linear Foot	4800		
A-73	80.08	Type 1A Junction Box Per Each	30		
A-74	80.10	Conductor, 3C #6 AWG Per Linear Foot	9100		
A-75	80.14	Single Meter Pad-Mount Load Center, Type 1A Per Each	1		
A-76	80.14	Modify Single Meter Pad-Mount Load Center, Type 1A Per Each	1		

**CITY OF PALMER
LUCAS AREA WATER AND STREET IMPROVEMENTS
BID PROPOSAL**

SCHEDULE A - BASE BID - Lucas Area Water and Street Improvements

Item No.	Spec. No.	Work Description	Estimated Quantity	Unit Price	Total Bid Price
A-77	80.23	Luminaire 109W Full Cutoff Type 3 LED Lamp Per Each	30		
A-78	80.28	Relocate Luminaire Pole Per Each	1		

Total Schedule A

=====

**CITY OF PALMER
LUCAS AREA WATER AND STREET IMPROVEMENTS
BID PROPOSAL**

SCHEDULE B - ADDITIVE ALTERNATE 1 - Street Rehabilitation

Item No.	Spec. No.	Work Description	Estimated Quantity	Unit Price	Total Bid Price
B-1	20.04	Unclassified Excavation Per Cubic Yard	225		
B-2	20.05	Type II Classified Fill and Backfill Per Ton	220		
B-3	20.05	Type II-A Classified Fill and Backfill Per Ton	110		
B-4	20.06	Leveling Course Per Ton	650		
B-5	20.17	Remove Existing Sidewalk or Concrete Apron Per Square Yard	152		
B-6	20.18	Remove Existing Curb and Gutter Per Linear Foot	303		
B-7	20.19	Remove Existing Pavement Per Square Yard	4,863		
B-8	20.21	Grading Existing Surfaces Per Linear Foot	1,051		
B-9	30.02	P.C.C. Curb and Gutter, Type 1,3,4 Per Linear Foot	303		
B-10	30.03	P.C.C. Sidewalk 4" thick Per Square Yard	114		
B-11	30.03	P.C.C. Sidewalk 6" thick Per Square Yard	71		
B-12	30.07	P.C.C. Curb Ramp (With Detectable Warning Tile) Per Each	4		
B-13	40.02	A.C. Pavement (Class E) Per Ton	910		
B-14	65.02	Construction Survey Measurement Per Lump Sum	1 Job		
B-15	70.03	Adjust Manhole Ring Per Each	5		

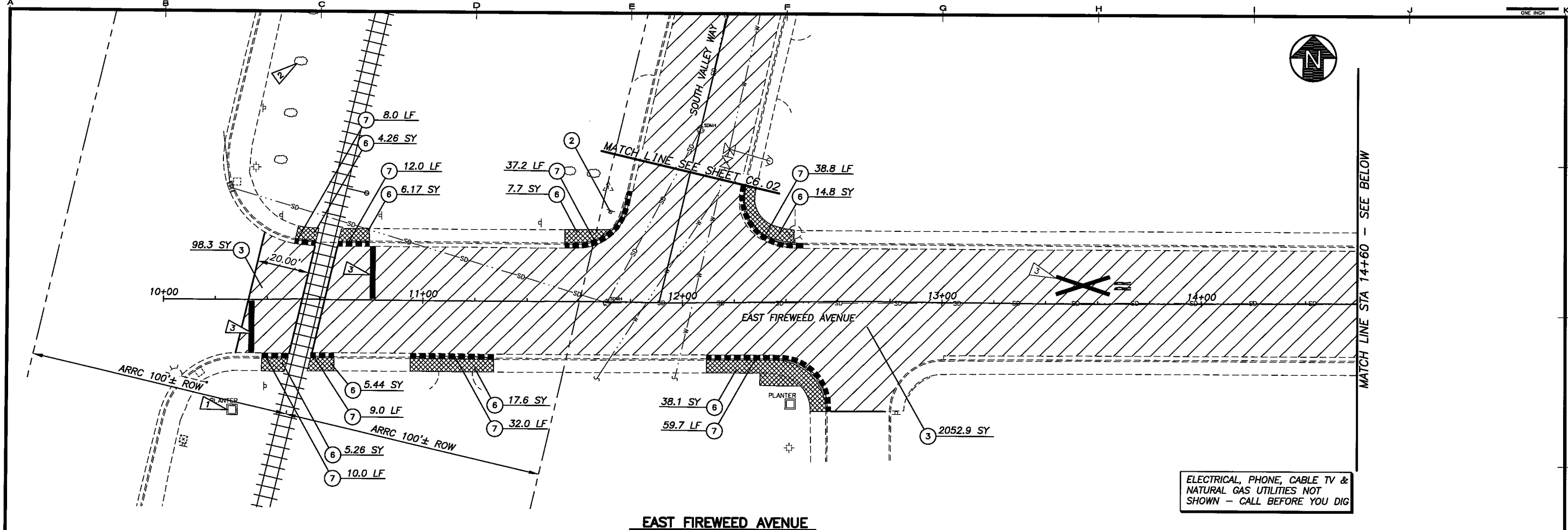
**CITY OF PALMER
LUCAS AREA WATER AND STREET IMPROVEMENTS
BID PROPOSAL**

SCHEDULE B - ADDITIVE ALTERNATE 1 - Street Rehabilitation

Item No.	Spec. No.	Work Description	Estimated Quantity	Unit Price	Total Bid Price
B-16	70.08	Adjust Mainline Valve Box to Finish Grade Per Each	2		
B-17	70.19	Traffic Markings, 4-inch, White Per Linear Foot	1,196		
B-18	70.19	Traffic Markings, 4-inch, Yellow Per Linear Foot	2,021		
B-19	70.19	Traffic Markings, 24-inch, White Per Linear Foot	303		
B-20	70.19	Traffic Markings, Words & Legends, White Per Lump Sum	1 Job		
B-21	70.20	Standard Sign Per Square Foot	29		
B-22	70.20	Remove and Salvage Existing Signs Per Each	1		
B-23	70.21	Traffic Maintenance Per Lump Sum	1 Job		
B-24	70.31	Storm Water Pollution Prevention Plan Per Lump Sum	1 Job		
B-25	75.04	Topsoil at 4" depth Per 1,000 square feet	1.7		
B-26	75.05	Seeding, Schedule A Mix Per 1,000 square feet	1.7		

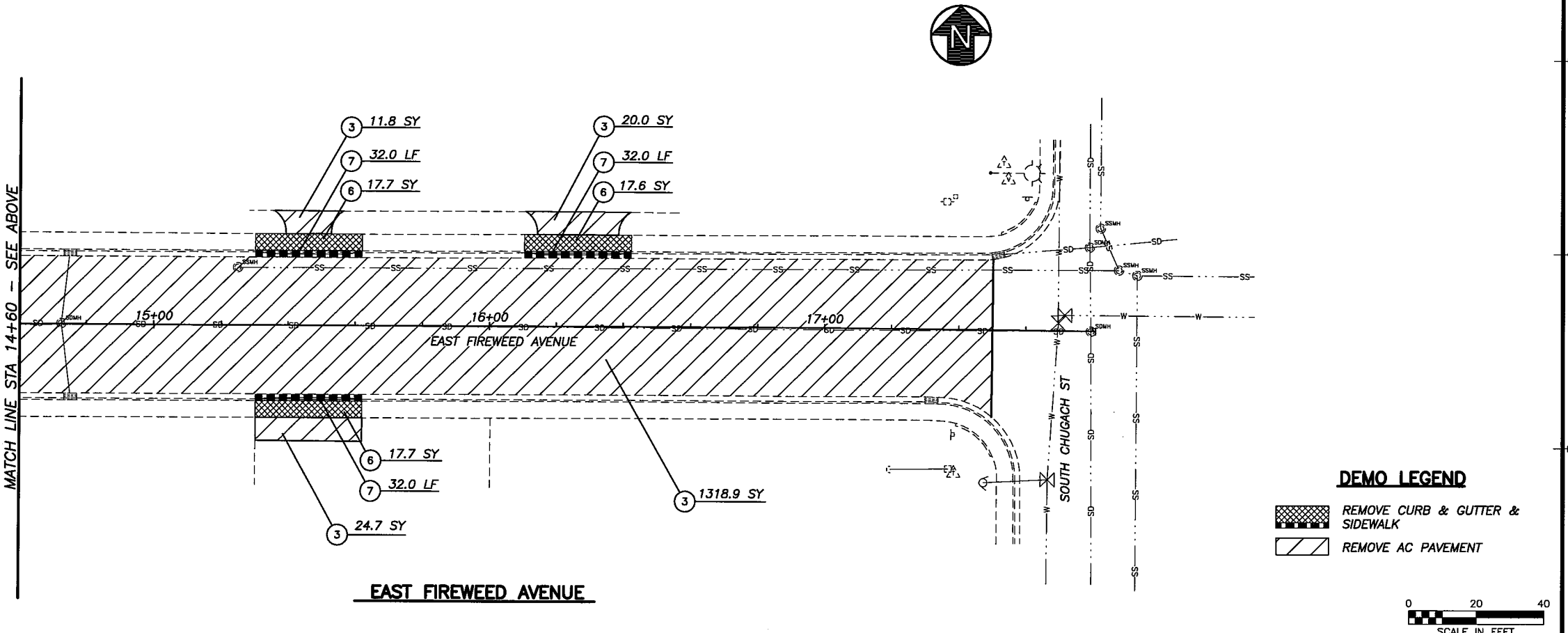
Total Schedule B

H:\Jobs\07-033\Palmer Lucas Area Water-Streets\CAD\Drawings\Archive\Addendum 1\07033_00_C601-602_1=20_05/15/08 at 17:32 by ecb
 07-033_00_C601-602_1=20_05/15/08 at 17:32 by ecb
 XREF: 07033_00_B001, 07033_00_X01, 07033_01_X01

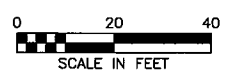


- NOTES**
- SEE SHEET G1.02 FOR PROJECT NOTES, LEGEND, MISCELLANEOUS WORK ITEMS AND ABBREVIATIONS, AND SHEET S1.01 FOR SURVEY CONTROL INFORMATION.
 - STATIONING IS STREET CENTERLINE ALIGNMENT UNLESS NOTED OTHERWISE.
 - CAUTION - OVERHEAD UTILITIES. MAINTAIN CLEARANCE TO OVERHEAD POWER PER MEA & NECA REGULATIONS.
 - EXISTING UTILITIES ARE SHOWN IN APPROXIMATE LOCATION. PROTECT IN PLACE AND WORK AROUND ALL EXISTING UTILITIES NOT SPECIFICALLY IDENTIFIED AS "TO BE RELOCATED".
 - ALL WORK THIS SHEET IS ADDITIVE ALTERNATE 1.
- RELOCATE PLANTER APPROXIMATELY 15' SOUTHWEST AS DIRECTED BY THE ENGINEER. (INCIDENTAL)
 - REMOVE/RELOCATE EXISTING TREE, AS DIRECTED BY ENGINEER. (INCIDENTAL)
 - AS-BUILT EXISTING RAILROAD PAVEMENT MARKINGS PRIOR TO PAVEMENT REMOVAL. (INCIDENTAL) REINSTALLATION TO MATCH EXISTING.

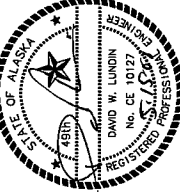
CALL BEFORE YOU DIG!
 THE CONTRACTOR SHALL NOTIFY ALL AREA UTILITY COMPANIES PRIOR TO COMMENCEMENT OF EXCAVATION
 LOCATE CALL CENTER OF ALASKA 1-800-478-3121
 CITY OF PALMER PUBLIC WORKS 745-3709
 ADOT&PF - PALMER 745-2159



DEMO LEGEND
 REMOVE CURB & GUTTER & SIDEWALK
 REMOVE AC PAVEMENT



REVISIONS	DATE	DESCRIPTION
1	5-15-08	ADDENDUM #1
2		
3		
4		
5		



HATTENBURG DILLEY & LINNELL
 Engineering Consultants
 • ENGINEERING
 • SURVEYING
 • PROJECT MANAGEMENT
 • EARTH SCIENCE
 • PLANNING
 • ENVIRONMENTAL
 (807) 584-2120 - ANCHORAGE
 (807) 746-5230 - PALMER
 WWW.HDALASKA.COM

LUCAS AREA WATER AND STREET IMPROVEMENTS
CITY OF PALMER
 PALMER, ALASKA

ADDITIVE ALTERNATE 1

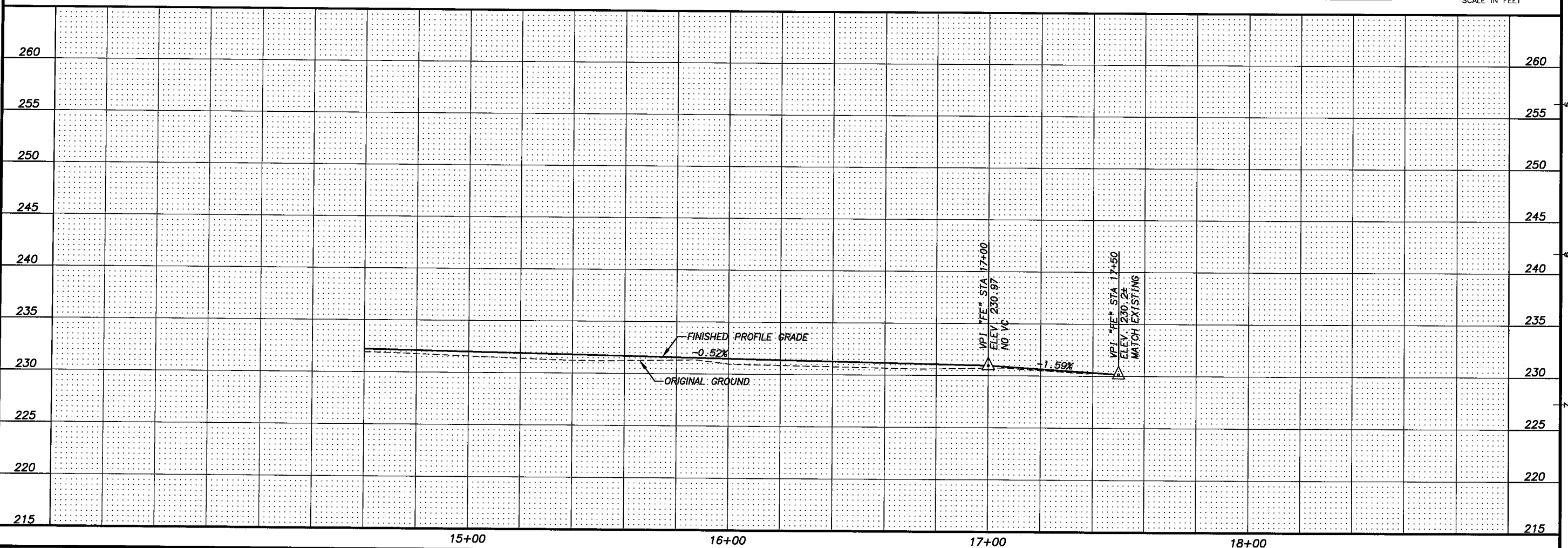
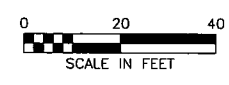
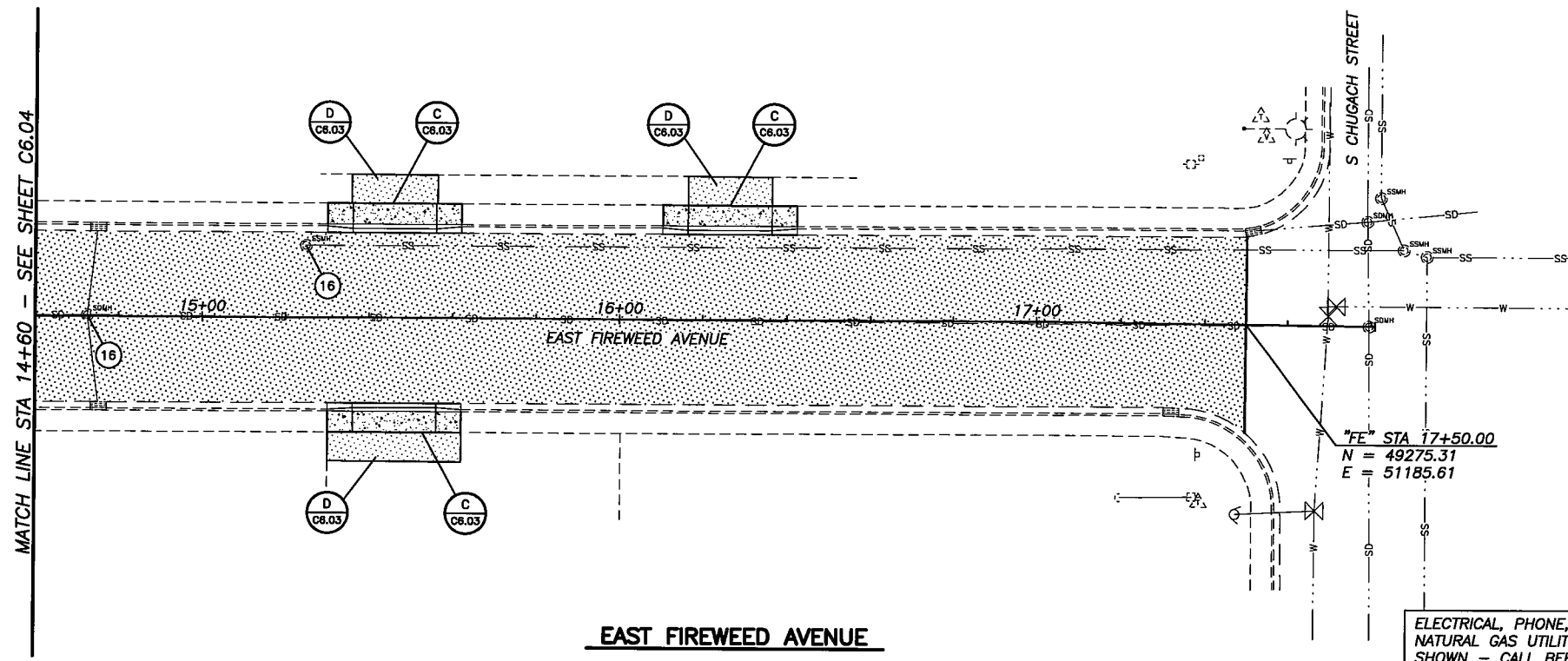
SHEET TITLE
 E. FIREWEED AVENUE DEMOLITION PLAN 10+00 TO EOP

SHEET
 C6.01

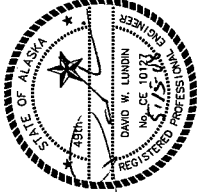
DRAWN BY: NRY CHECKED BY: CAB
 DATE: 4/27/08 SCALE: 1" = 20'
 JOB NUMBER: 07-033

NOTES

- A. SEE SHEET G1.02 FOR PROJECT NOTES, LEGEND, MISCELLANEOUS WORK ITEMS AND ABBREVIATIONS, AND SHEET S1.01 FOR SURVEY CONTROL INFORMATION.
- B. STATIONING IS STREET CENTERLINE ALIGNMENT UNLESS NOTED OTHERWISE.
- C. CAUTION OVERHEAD UTILITIES. MAINTAIN CLEARANCE TO OVERHEAD POWER PER MEA & NECA REGULATIONS.
- D. EXISTING UTILITIES ARE SHOWN IN APPROXIMATE LOCATION. PROTECT IN PLACE AND WORK AROUND ALL EXISTING UTILITIES NOT SPECIFICALLY IDENTIFIED AS "TO BE RELOCATED".
- E. ALL WORK THIS SHEET IS ADDITIVE ALTERNATE 1.
- F. SEE INTERSECTION GRADING AND CURB LAYOUT SHEETS FOR DETAILED GRADING & LAYOUT INFORMATION.
- G. DRIVEWAYS: 20' WIDTH, APPROXIMATELY 10' LENGTH, PER C5.03.



REVISIONS	DATE	DESCRIPTION
1	15-15-08	ADDENDUM #1
2		
3		
4		
5		



HDL HATTENBURG DILLEY & LINNELL
Engineering Consultants

- EARTH SCIENCE
- SURVEYING
- PROJECT MANAGEMENT
- PLANNING
- ENVIRONMENTAL

(807) 564-2120 - ANCHORAGE
(807) 748-6250 - PALMER
WWW.HDLALASKA.COM

LUCAS AREA WATER AND STREET IMPROVEMENTS

CITY OF PALMER

PALMER, ALASKA

ADDITIVE ALTERNATE 1

SHEET TITLE
E. FIREWEED AVENUE STREET PLAN & PROFILE 14+60 TO EOP

SHEET
C6.05

DRAWN BY: **NRV** CHECKED BY: **DWL**

DATE: **4/27/08** SCALE: **1" = 20'**

JOB NUMBER: **07-033**

H:\jobs\07-033 Palmer Lucas Area Water-Streets\CAD\DRAWINGS\Archive\Addendum 1\07033_00_C604-606_1=20_05/15/08 at 17:43 by cab
 LAYOUT: all-sheets
 VIEW: C605_E_D0800, C605_H_L5000, C605_H_X7700
 XREF: 07033_00_B601, 07033_01_X01