



PALMER *Alaska*

WARREN “BUD” WOODS PALMER MUNICIPAL AIRPORT *Newsletter*

Volume 4 | Issue 3
July 2020

Frank J. Kelly

Airport Superintendent

Phone: 907-761-1334
Email: fkelly@palmerak.org

Mail: 231 W. Evergreen Ave
Palmer, AK 99645

Office: 901 E. Yukon St.
Palmer, AK 99645

Airport Advisory

Commission Calendar

All meetings are at 7 p.m. on the fourth Thursday of the month on a quarterly basis in the Palmer City Hall Council Chambers, 231 W. Evergreen Avenue. Special meetings will be held on an “As Needed” basis on the fourth Thursday of the month following the regularly scheduled quarterly meeting.

- ❖ January 23, 2020
- ❖ January 28, 2020 *
Joint w/ City Council
- ❖ April 23, 2020 *
Cancelled Covid 19
- ❖ July 23, 2020*
Cancelled Covid 19
- ❖ October 22, 2020

Contact: Chair Ken More at 907-240-3286 or flyartic@articsairacademy.com for more information.

Your source for news at the Warren “Bud” Woods Palmer Municipal Airport
“The aeronautical gateway to Palmer and the Matanuska Valley”

What’s Happening?

Construction Project Update: 2019 “Airfield Safety Improvements” Project

The ASI project is now substantially complete, winding down and should be wrapped up and closed out this fall. The tree clearing area off the transitional surface south of Runway 10/28 has been completed and brome hay is currently being planted to stabilize the soils. Both the new airfield directional signs and the new apron lighting have been completed, with final apron light adjustments occurring once it is dark enough outside. The new directional signs are in place and the three new Blinkerstop and Aircraft Operations Area Danger signs are now in place and operational at the main entrances to the airport.

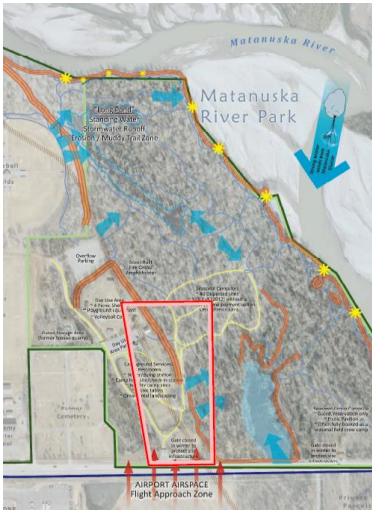


(Photo: Cleared transitional surface off RW 10/28 ready for brome hay seeding looking west)

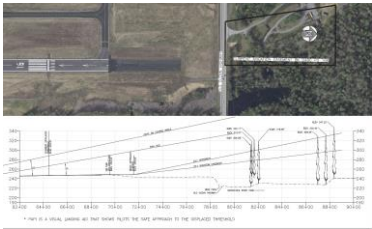
New Projects Underway for 2020:

“Avigation Easement Planning Study”

The City of Palmer is in the process of completing an Avigation Easement Planning Study at Warren “Bud” Woods Palmer Municipal Airport. Runway 16/34 is the only runway in the Mat-Su that is capable of servicing large aircraft, such as may be needed for wildland aerial firefighting or for receiving emergency relief supplies following a disaster. As the owner of the airport, and a recipient of federal funds, Palmer is obligated to ensure that runways are safe for use by



(Diagram: Limited Existing Avigation Easement Currently in Place with MSB)



(Diagram: Example of Landing Threshold & Tree Top Penetration)

FAA Chooses Palmer for its New Experimental Weather Station:

With the generous donation of space and electricity by New Horizons Telecom, Inc. the FAA has erected a new proto-type weather station for testing in Alaska. Test are slated to continue thru September 2020.



(Photo: New FAA Experimental Weather Station off the South Ramp Area)

aircraft. The lack of an avigation easement in the Runway 16 approach limits the airports ability to fully utilize the entire runway length and to comply with the applicable safety requirements. The purpose of the study is to determine a solution that allows the airport to safely and more fully utilize Runway 16/34. To do that, the critical aircraft must be determined, which will define the required runway length and runway threshold locations for current and future airport operations. Establishing an avigation easement would allow the airport to maintain an obstruction-free approach to Runway 16.

Currently, Palmer does not have adequate rights to control and maintain the entire runway approach surface to Runway 16. In 1990, due to trees located off the airport property within the Mat-Su Borough-owned Matanuska River Park boundary, the runway threshold was displaced 500 feet from the runway end to provide an obstruction-free 20:1 approach surface. Trees that penetrate the approach surface create safety issues for pilots and users of the park, as well as those that travel the Old Glenn Highway and utilize the multi-use pathway between the airport and the park. The park hosts 86 spaces for tents and 20 caravan sites for RV’s. In addition, the park has four pavilions, a playground, and a volleyball court, and provides access to the Matanuska Susitna River via several four-season trails. The tent sites, RV caravan sites, pavilions and playground are located in line with the Runway 16/34 approach and departure path.

The City of Palmer in conjunction with the Mat-Su Borough is studying alternatives to consider that will secure the continued and unchanged use of Matanuska River Park and allow the City of Palmer adequate rights to maintain an obstruction-free approach to Runway 16. Questions and comments may be submitted to the Airport Superintendent.

“Blast Pad Paving Project”

The runway Safety Area (RSA) grade beyond the Runway 16 and Runway 34 thresholds is stabilized with recycled asphalt pavement or RAP. These surfaces have begun to unravel due to propeller wash and or jet blasts. Any loose RAP can be a source of FOD and the loss of the bound surface also exposes the RSA grade to erosion. This new project will add 200’ of paved blast pad surface on either end of the runway. It is hopefull that this project can be completed by the late fall of 2020.



(Photo: Reveling in the RSA of RW 16 looking north)



Additional PAQ News Updates

COVID-19 HEALTH EMERGENCY & AIRPORT OPERATIONS:

Airport Management Office:

The Airport Management Office is open and operational, but still closed to the public, unless by scheduled appointment. If you are visiting the airport office by appointment, please bring your face covering and practice social distancing. To conduct airport business, please call the airport office main line at (907) 761-1334 or contact the airport superintendent by email at fkelly@palmerak.org.

Hay Making Operations Have Seen A Good First Cutting for 2020:

The weather has held off long enough for RK Ranch to complete it first round of hay cutting in 2020 and get the large round bales moved off the airport quickly.



(Photo: Hay Bales Northeast of the Main Runway)



(Photo: Large Round Hay Bales East of the Main Runway Looking South)



(Photo: Tree Clearing and Excavation on the Lazy Mountain Hangar Project Begin in Late June)

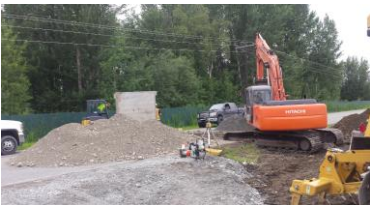
Construction Activities for Private Hangars Continue

Lazy Mountain Hangar, LLC

PIPIT Carpentry, Inc., the general contractor for the Lazy Mountain Hangar project has things hoping on this lot as footings are being poured while the sewer line is cut in to service the hangar.



(Photo: Equipment is Staged for the Next Days Activities of Footing Excavation)



(Photo: Sewer Line Connections on S. Airport Road are in Progress)



(Photo: An S & S Concrete Pump Truck Places Concrete inside of Footings July 9th, 2020)