



Palmer CITY LINKS

Celebrate Palmer...

...with the Best

Places to Shop!

*Listed Alphabetically

Active Soles



Location: 642 S. Alaska St., Ste # 100
Phone: 907-746-0600
Type of store: Performance, Running Footwear and Clothing
Specialty: Running, Walking, Hiking Shoes
Why do you like Palmer? Palmer is a close community focused on health and wellness now and for the future.

Special Edition II

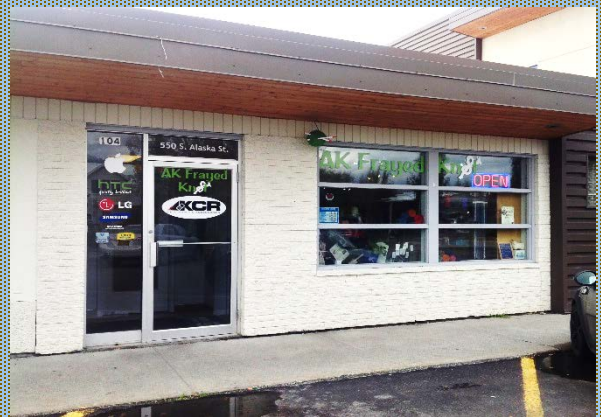
AK Cell Repair & Accessories



Location: 550 S. Alaska St., Ste 104A
Phone: 907-745-4880
Type of store: Electronic Repair and Accessories

Specialty: Sync cables, chargers, speakers, headphones, protective cases.
Why do you like Palmer? We love doing business in Palmer and providing quality service to our customers, who are also our neighbors and friends

AK Frayed Knot



Location: 550 S. Alaska St., Ste # 104C
Phone: 907-521-9276
Type of store: Yarn and fiber



Palmer CITY LINKS

Specialty: Alaska hand spun yarn, hand dyed fiber, vintage yarns and notions.

Why do you like Palmer? I live here and our quaint little town lends itself to a specialty shop like mine. My fellow merchants are friendly and nurturing. I just love Palmer!

Alaska Fireplace & Accessories



Location: 1150 S. Colony Way, Ste # 10

Phone: 907-746-4395

Type of store: Hearth and Home

Specialty: Woodstoves and Fireplace Accessories.

Why do you like Palmer? Palmer is a small town where I will live forever.



Special Edition II

Backcountry Bike and Ski



Location: 132 W. Arctic Ave.

Phone: 907 746-5018

Type of store: Bicycles and accessories of all shapes and sizes.

Specialty: A range of quality brands to fit a wide variety of budgets and riding styles. Along with tune ups and repairs, we provide all the accessories to make your experience successful and fun.

Why do you like Palmer? Palmer provides a beautiful backdrop for a wonderful community.

Charlottes Flowers



Location: 105 E. Arctic Ave., Ste # 3

Phone: 907-745-5550

Type of store: Flowers and gifts for any occasion.



Palmer CITY LINKS

Specialty: Premiere floral designers hand craft beautiful flower arrangements for any occasion.

Why do you like Palmer? Quiet, amazing little town that has so much to offer. The view we have will never get old and the community is so family oriented that it makes this small town a place we love to call home.

Chickadee's



Location: 175 W. Arctic Ave.

Phone: 907-745-2200

Type of the store: Vintage, Antiques

Specialty: Unique antique items; from tools to crystal.

Why do you like Palmer? Community feel.



Special Edition II

Cover Ups Design



Location: 840 S. Colony Way

Phone: 907-746-4739

Type of store: Vintage Décor, custom blinds and draperies, upcycled furniture and décor, reclaimed scrap wood for DIY-ers.

Specialty: Annie Sloan Chalk Paint, The Real Milk Paint, AK Chicks Clothing, Vintage Poppy Storefront, vintage furniture and décor.

Why do you like Palmer? We love the small town and how the community supports small businesses.

Discount Smoke Shop



Location: 340 W. Evergreen Ave.

Phone: 907-745-8814

Type of store: Tobacco

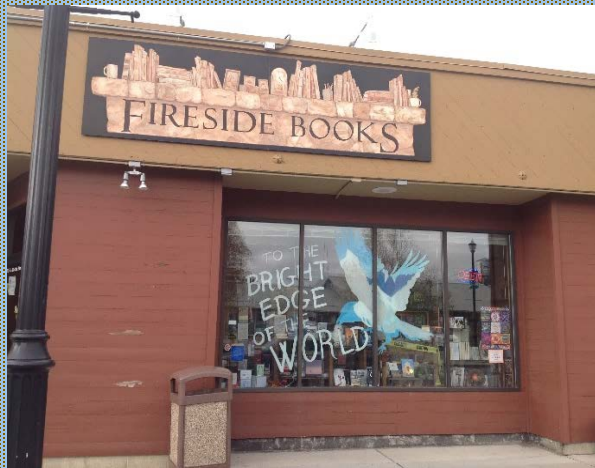


Palmer CITY LINKS

Specialty: Roll your own Cigarettes and E Cig Supplies

Why do you like Palmer? Palmer is a great place to own a business and serve the public.

Fireside Books



Location: 720-B S. Alaska St.

Phone: 907-745-2665

Type of store: Used and New Books

Specialty: Books of National and Local Authors.

Why do you like Palmer? Palmer reads! It is an area where people read more than in any other place in the valley.



Special Edition II

Forever Endeavor



Location: 642 S. Alaska St., Sue # 105

Phone: 907-745-4387

Type of store: Art supplies, gifts and consignment.

Specialty: Local handcrafted items

Why do you like Palmer? Palmer is home.

Fred Meyer



Location: 650 S. Cobb St.

Phone: 907-761-4200

Type of store: Grocery, pharmacy, electronics as well as some home and apparel goods. We also offer a Fuel Center.



Palmer CITY LINKS

Special Edition II

Specialty: Deli, bakery, high end meat and seafood departments. We offer fishing licenses, photo developing and a Money Market.

Why do you like Palmer? We love the small town environment.

Glacier Aircraft Parts



Location: 905 Cope Industrial Way

Phone: 907-745-7100

Type of store: Aircraft parts

Specialty: Air frame parts, hardware and electrical parts.

Why do you like Palmer? Small community, airport and location.

Hot Hot Chocolate Shoppe



Location: 550 S. Alaska St., Ste # 110

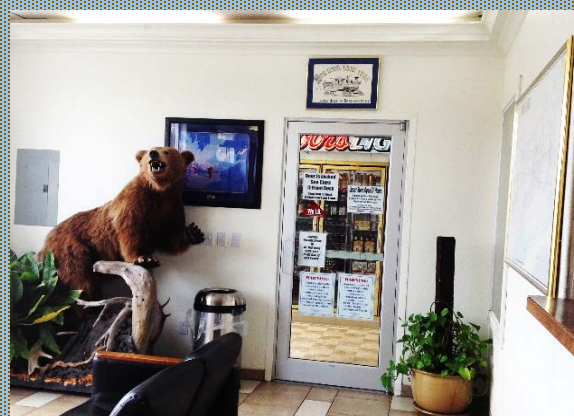
Phone: 907-746-7334

Type of store: Chocolate Boutique

Specialty: Hand dipped gourmet truffles made in store.

Why do you like Palmer? Palmer is a great little town for small businesses! We have wonderful customers!

Iron Horse Liquor



Location: 606 S. Alaska St., #803

Phone: 907-745-3330

Type of store: Liquor

Specialty: Open from 8am-5am, 360 days a year.

Why do you like Palmer? Great community!





Palmer CITY LINKS

Madd Matters



Location: 1088 S. Colony Way

Phone: 907-745-6045

Type of store: Matting and framing, memorabilia and special art effects.

Specialty: We offer art and knitting classes, home décor and antiques.

Why do you like Palmer? We are a family friendly community.

Non-Essentials



Location: 728 S. Alaska St.

Phone: 907-745-2258

Type of store: Eclectic. We focus on food and dabble in everything from jewelry to alpaca hats!

Specialty: An amazing array of Alaskan food and gifts.

Special Edition II

Why do you like Palmer? Palmer is the quintessential small town. The streets are lined with the old fashioned owner operated businesses and I wanted to be part of that!

O'Reilly Auto Parts



Location: 401 Glacier View Ave.

Phone: 745-8155

Type of store: Auto Parts

Specialty: Over 130 years combined experience on staff including ASE certified team members as well.

Why do you like Palmer? I have been all over the country and this is the best clientele, best people I have ever had the opportunity of serving. I never plan on moving away from this town.





Palmer CITY LINKS

Special Edition II

Shane Lamb Gallery



Location: 550 Alaska St., Ste # 107

Phone: 907-746-3343

Type of store: Alaskan Art, photography and Gifts.

Specialty: Large selection of Shane Lamb art and photography. We also offer an inspiring array of arts and crafts from over 50 other Alaskan artists.

Why do you like Palmer? Great art community with a homey small town feel. Palmer is a friendly family community.

Silvertip Design



Location: 421 S. Alaska St.

Phone: 907-745-2902

Type of store: A unique apparel and gift shop.

Specialty: All garments printed or embroidered in house. Gifts for every occasion, most of them made in Alaska by Alaskan artisans.

Why do you like Palmer? Palmer is home. Great people and a very desirable home town community.

Spenard Builders Supply



Location: 97 Inner Springer Loop Rd.

Phone: 907-746-7001

Type of store: Building material

Specialty: Specialized from small homeowner projects to large contractors' projects.

Why do you like Palmer? It is important to be in this part of the valley and serve the residents of the Palmer area.





Palmer CITY LINKS

The Gallery



Location: 1150 S. Colony Way

Phone: 907-745-1420

Type of store: The gallery

Specialty: Fine art, originals, collectibles, custom framing.

Why do you like Palmer? We have lived in Palmer since 1978 and when it came to opening The Gallery, Palmer was the first and only choice. I have never been disappointed with my choice.

The Garden Gate



Location: 810 S. Colony Way

Phone: 907-745-1450

Type of store: Women's clothing and gift shop.

Special Edition II

Specialty: Beautiful selection of clothing and gifts for all ages. Clothing with style, comfort that will travel well.

Why do you like Palmer? In the time when cars fly by strip malls, Palmer is a walkable town with a distinct character harkening to its Colony and farming foundation. Palmer has developed into a destination with great shopping and dining opportunities. Whether here for a few hours or a day, time in Palmer is a relaxing respite from a busy world.

Whimsy Gift Shoppe



Location: 642 S. Alaska St., Ste # 104

Phone: 907-745-4312

Type of the store: Gift boutique

Specialty: Home décor, apparel, accessories, everything for everyone.

Why do you like Palmer? Palmer is my home. I have been here forever.



Palmer CITY LINKS

Special Edition II

Other Places to Shop

AT&T

Location: 340 W. Evergreen Ave.

Phone: 907-746-3300

AK Jacks Hydroponic & Garden Supply

Location: 1150 S. Colony Way, Ste. # 9

Phone: 907-746-4774

Alaska Appliance Repair

Parts & Used Appliance

Location: 105 E. Arctic Ave., Ste # 5

Phone: 907-746-5767

B&B Bargains

Location: 708 S. Alaska St

Phone: 907-746-3667

Bishop's Attic II

Location: S. Bailey St.

Phone: 907-745-4215

Carrs/Safeway

Location: 664 W. Evergreen Ave.

Phone: 907-761-1400

CARQUEST Auto Parts

Location: 848 S. Colony Way

Phone: 907-745-4442

Family First Treasure

Location: 403 S. Alaska St.

Phone: 907-746-6200

GCI

Location: 125 W. Evergreen Ave.

Phone: 1-800-800-4800

In-Fusion

Location: 340 W. Evergreen Ave.

Phone: 907-745-2033

Just Sew

Location: 579 S. Alaska St.

Phone: 907-745-3649

Light It Up

Location: 1150 S. Colony Way Ste. # 11

Phone: 907-745-5483

Miller Enterprises

Location: 139 N. Bonanza St.

Phone: 907-745-0100

Napa Auto Parts

Location: E. Arctic Ave.

Phone: 907-745-2181

Palmer Pure Water

Location: 105 E. Arctic Ave.

Phone: 808-878-2609

**All shops are listed in alphabetical order. The intent of this publication is to promote Palmer.*