

Mayor Edna B. DeVries
Deputy Mayor Pete LaFrance
Council Member Julie Berberich
Council Member Steve Carrington
Council Member Linda Combs
Council Member Sabrena Combs
Council Member David Fuller

City Attorney Michael Gatti
City Clerk Norma I. Alley, MMC
City Manager Nathan Wallace

City of Palmer, Alaska
Special City Council Meeting
June 25, 2019, at 6:00 PM
City Council Chambers
231 W. Evergreen Avenue, Palmer
www.palmerak.org

AGENDA

A. CALL TO ORDER

B. ROLL CALL

C. PLEDGE OF ALLEGIANCE

D. APPROVAL OF AGENDA

E. AUDIENCE PARTICIPATION

F. NEW BUSINESS

1. Committee of the Whole: Presentation from Mat-Su Trails and Parks Foundation Director Wes Hoskins
(note: action may be taken by the council following the committee of the whole)

G. RECORD OF ITEMS PLACED ON THE TABLE

H. COUNCIL MEMBER COMMENTS

I. ADJOURNMENT



Mat-Su Trails and Parks Foundation

Building a World-Class Park and Trail System for the Mat-Su Borough

**World-Class | Wild |
Accessible**



The Mat-Su Trails and Parks Foundation supports backcountry and front-country travel by funding the development of incredible trails for users of all kinds. We are helping to create opportunities that promote healthy, happy, active lives.





Mission

To be the resource, inspiration,
and catalyst for trail and park
development in the
Mat-Su Borough




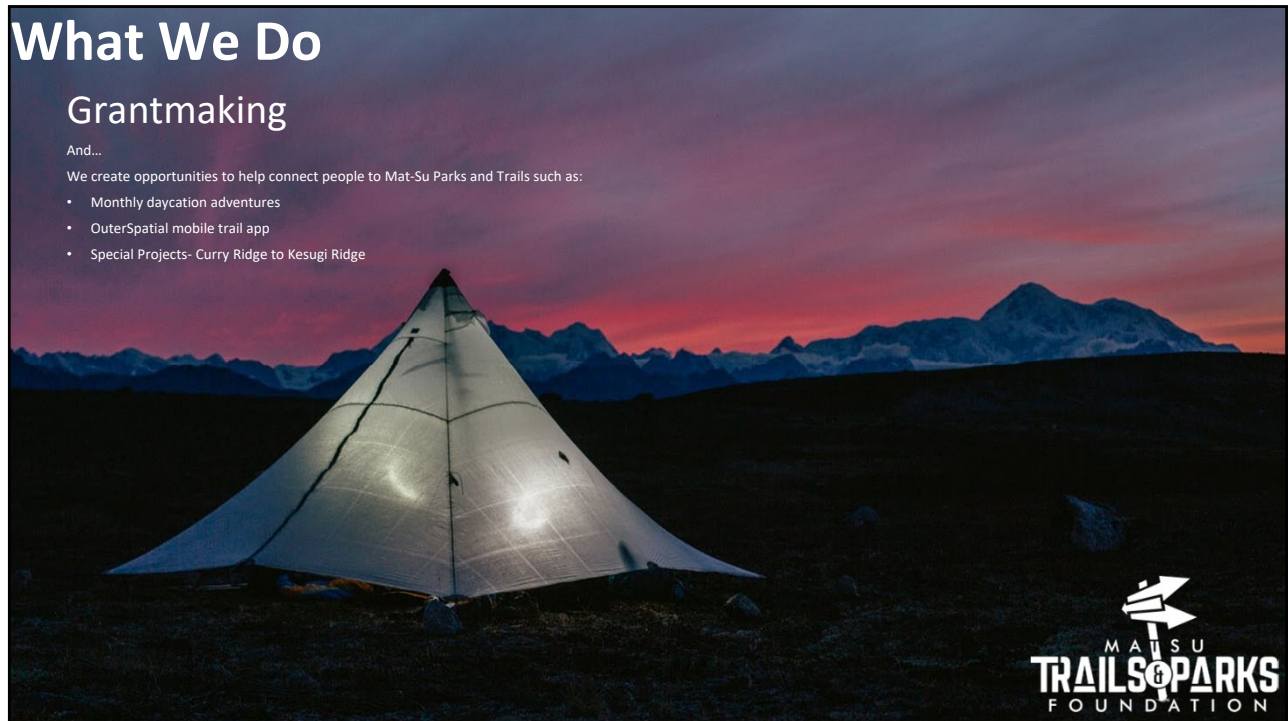
What We Do

Grantmaking

And...

We create opportunities to help connect people to Mat-Su Parks and Trails such as:

- Monthly daycation adventures
- OuterSpatial mobile trail app
- Special Projects- Curry Ridge to Kesugi Ridge





Types of Grants Awarded Since 2014



MATSU
TRAILS & PARKS
FOUNDATION



Grow Palmer Edible Trail

Cement Planters and planting supplies



Snowbird Hut in Hatcher Pass

American Alpine Club of Alaska

- Purchase materials to finish the hut and transport the materials



OPPORTUNITY



Wasilla Creek Boardwalk

Great Land Trust

- Materials to build elevated boardwalk trail along Wasilla creek in Palmer Hay Flats State Game Refuge



ACCESSIBLE



Kesugi Ridge Latrines

Alaska State Parks

- Construction materials to build a latrine along the Kesugi Ridge trail located at Jawbone and Ermine trails



ENGAGED



Settlers Bay Coastal Park

Great Land Trust

- Land Acquisition funds to purchase 300 acres of land adjacent to Palmer Hay Flats State Game Refuge, three salmon streams, and the potential for miles and miles of trails
- Park Planning





Williwaw Community Park

Families for the Improvement of Safety and Health (F.I.S.H)

- Will help to revitalize area in a community that needs it
- accessible to kids in the area where no place to play exists now
- Has engaged partners



ADA Trail At GPRA

Community Champion
Roy Wahl

2 Grants
AK Trails - 2018
VBMH - 2019

Design and build a 1/2 mile long
ADA trail at GPRA



Our Grantmaking Program

A photograph of two cyclists in a grassy field. The cyclist in the foreground is wearing a white jersey with 'Palmer 'Jamie'' and 'Bike' visible, a white helmet, and sunglasses. The cyclist in the background is wearing a black jersey and a black helmet. A dark circular overlay is positioned on the right side of the image, containing the text 'Who We Fund' and a list of categories.

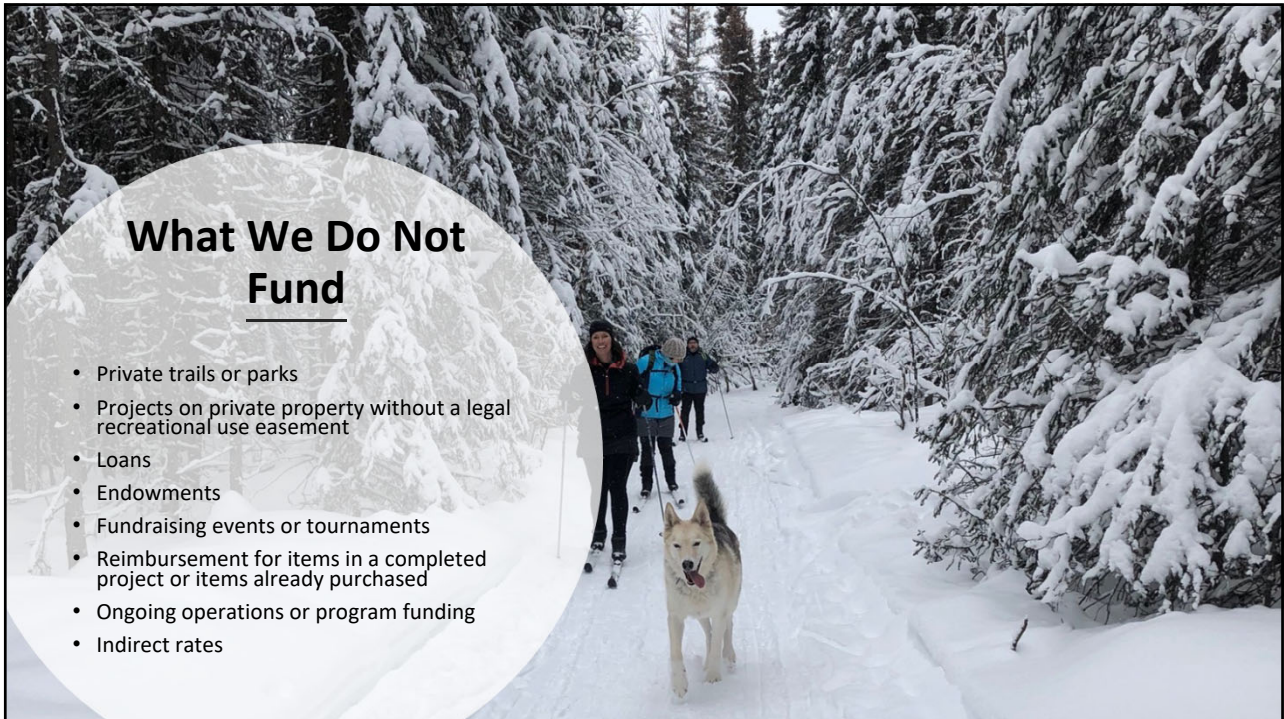
Who We Fund

- Non-Profit Organizations
- Federally Recognized Tribes
- Government Entities



What We Fund

- Planning for Trails and Parks
- Trail development (motorized and non, summer, winter and water)
- Land Acquisitions
- Equipment for Trail Maintenance and Development
- Education and Training Related to Sustainable Trail Development



What We Do Not Fund

- Private trails or parks
- Projects on private property without a legal recreational use easement
- Loans
- Endowments
- Fundraising events or tournaments
- Reimbursement for items in a completed project or items already purchased
- Ongoing operations or program funding
- Indirect rates



Our Process

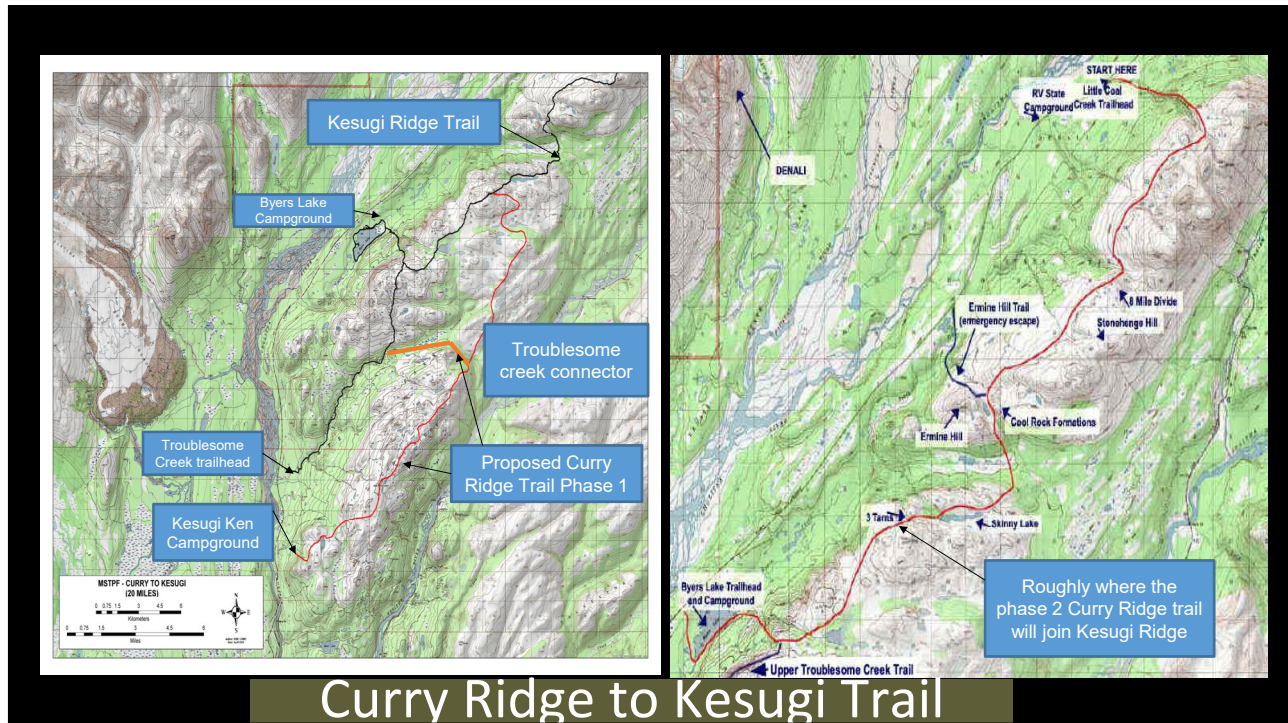
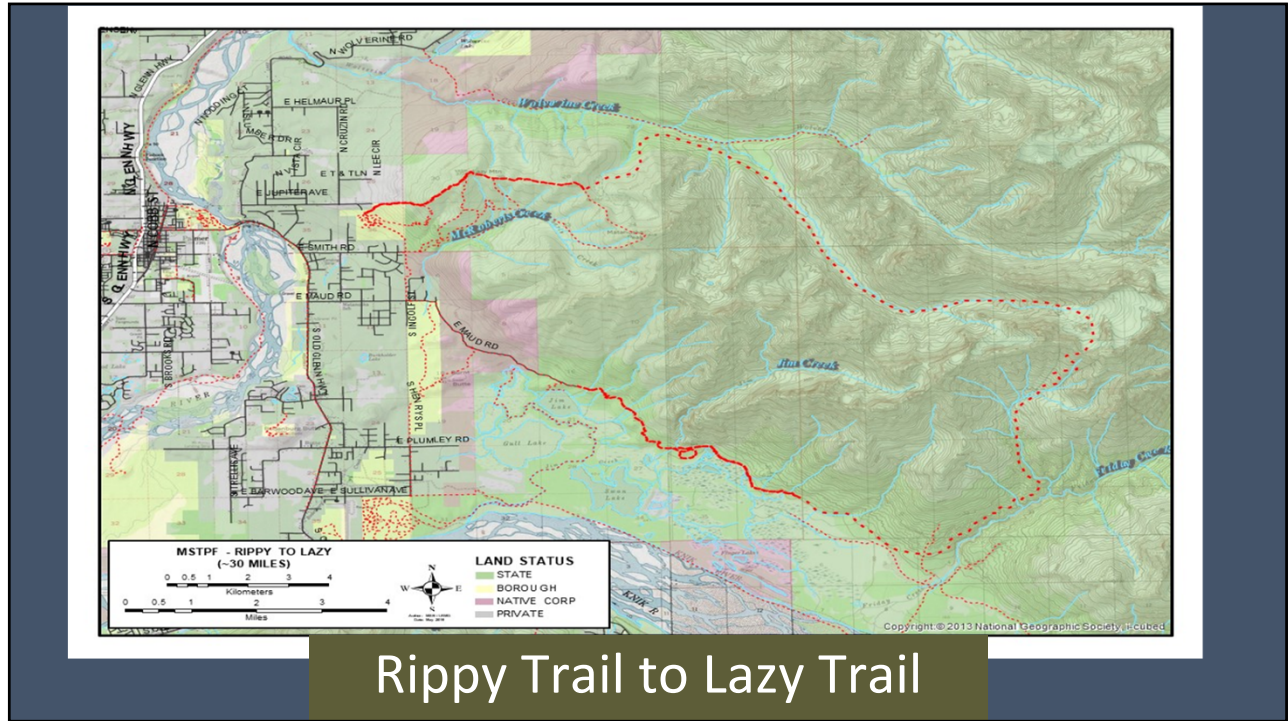
- Grant applications are accepted year-round
- Our board reviews grants quarterly
- Grant awards are made based on available funding
- When in doubt- contact us

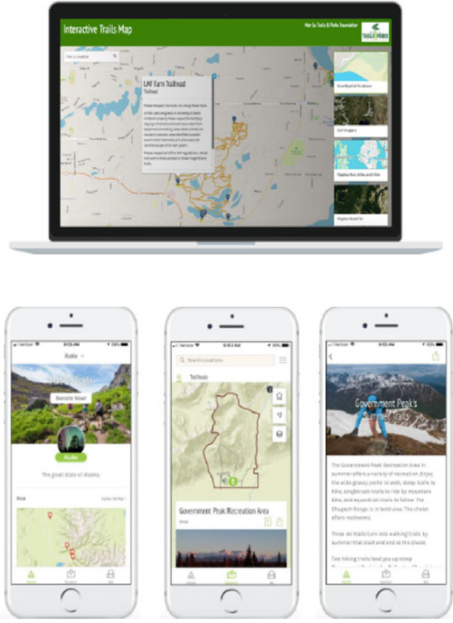


Our Vision: A World-Class System of Trails and Parks in the Mat-Su

Just Imagine...

- Neighborhood trail network connecting schools & parks
- Every community in Mat-Su is within a 10 min walk to a park designed to support play and access to nature for all ages and abilities
- Separated bike paths with benches at every mile along all major roads
- Excellent signage and trailhead amenities at every trail and park in Mat-Su and.....
- More multi-day backcountry trails
- Organized hut systems to support year-round multi-day trips

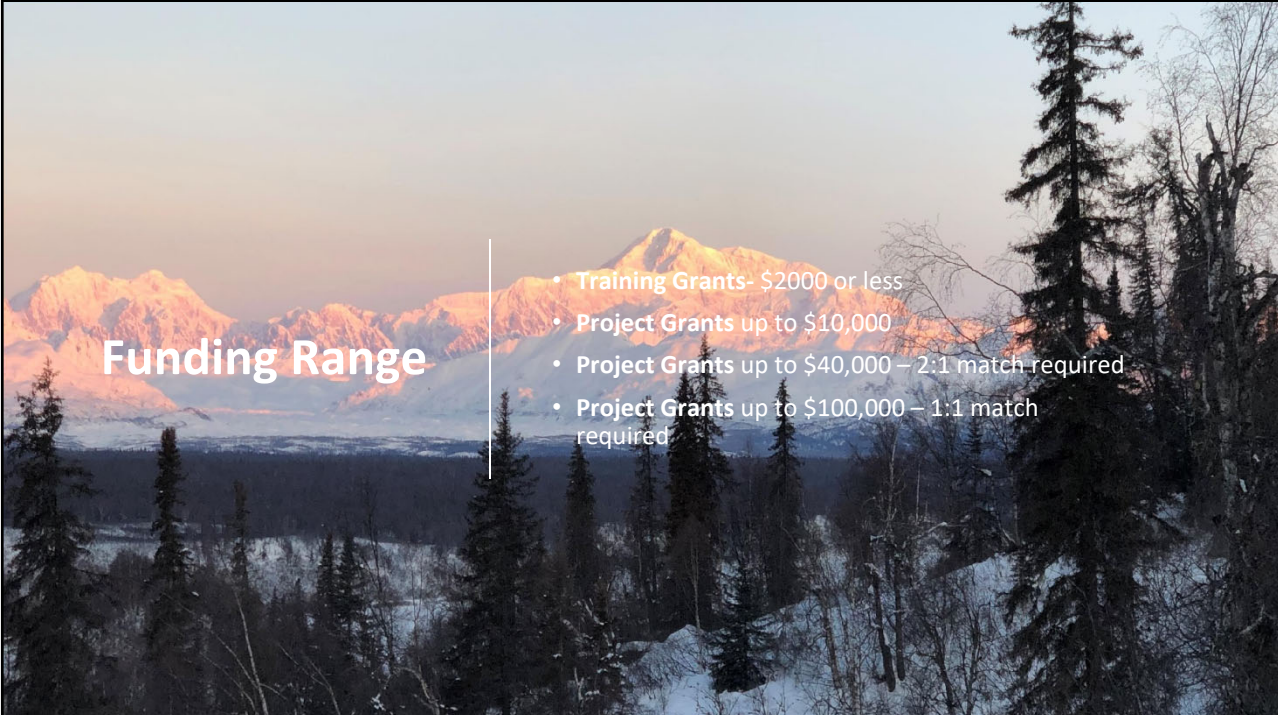




Our New Free Mobile Trail Map App!

- Search Outer Spatial in the app store
- 1500 + miles of trail in the Mat-Su Borough Includes all summer and winter trails including: biking, skiing, hiking, ATV, snow machine, and mushing)
- New interactive map at our website!

www.matsutrails.org



Funding Range

- Training Grants- \$2000 or less
- Project Grants up to \$10,000
- Project Grants up to \$40,000 – 2:1 match required
- Project Grants up to \$100,000 – 1:1 match required

What's The Story....

- **What** is your project vision
- **Who** else wants to see this project happen
- **Why** is this project needed- who benefits
 - Does it support front-country livability or
 - Does it support backcountry adventure
- **How** does your project support a Mat-Su with world-class trails and parks



The Plan...





How to Apply?

Once you have crafted your story about your project, have identified partners, have a solid budget, and know how this project contributes to building a world- class trails and parks system in the Mat-Su, please give us a call to share your project idea.

Then, visit our website to download application.

www.matsutrails.org



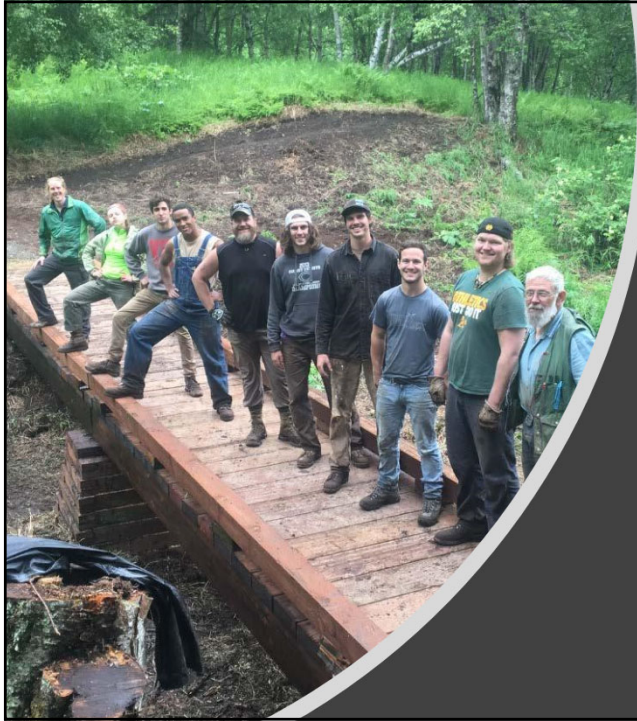
Purinton Creek Trail

Glacier View Community Council

- Trail Brushing
- Kiosks and Trail Maps
- Private Property / Stay on Trail Boundary Signs



WORLD-CLASS



Backcountry Horseman Carl Wagon Road trail

Supplies to build two bridges in the GPRA

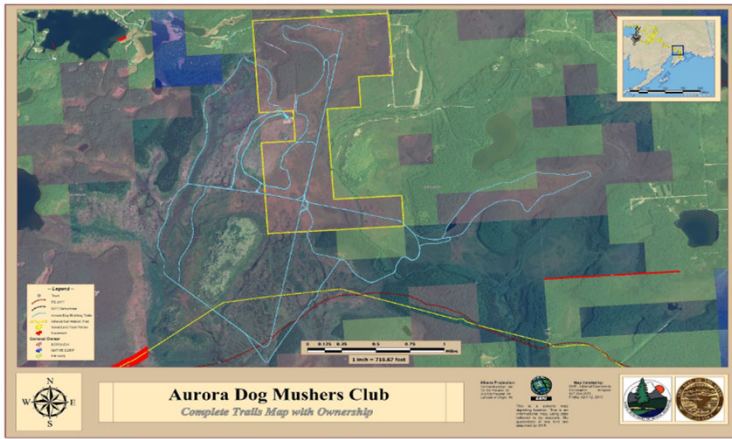


Holden Hut in Hatcher Pass

Mountaineering Club of Alaska

- Purchase materials to build the hut and transport the materials





Aurora Dog Musers Club

Aurora Dog Musers Club

- 25 year ~ Trail easement acquisition through DNR

SUPPORT



Over the next 10-years we intend to invest almost \$4million into the development of trails and parks

In the Mat-Su Borough

ISER Survey: the future of Mat-Su



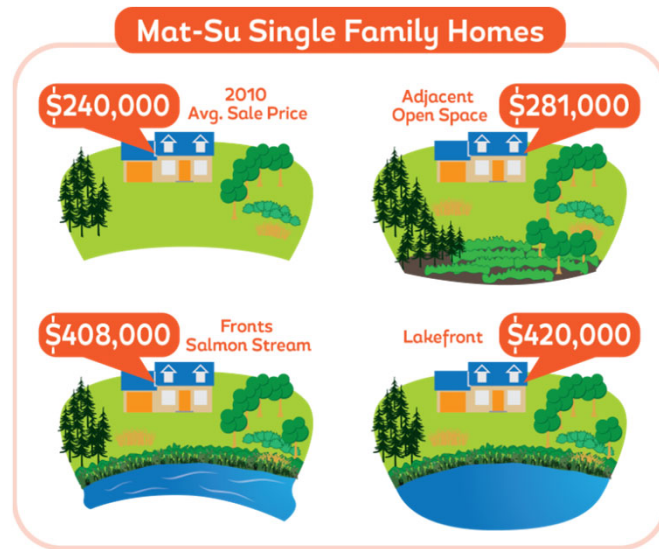
Top 3 actions residents would be willing to pay to achieve:



Read the complete survey results at iser.uaa.alaska.edu

Private Property Analysis 2013

- The University of Alaska's Institute of Social and Economic Research posed the question: do lakes, streams and open space have a positive influence on private property values? The short answer is, as you might suspect, yes they do



Mat-Su2050.org

Return on Investment
More trails and recreational amenities create a draw for in-state and out of state visitors. The longer they stay the more they spend and the more opportunity to support your business.

For every **\$1** spent in operating costs

The MSB receives over **\$5** in community assets & health benefits

Parks and trails benefit the local economy, fish and wildlife habitat and community health

Matsu2050.org

Tourism & the Economy

- \$240 Million in visitor fees that directly support local and state budget
- Tourism is Alaska's second-largest private sector employer. 1 in 10 jobs in Alaska are in the Visitor Industry
- One More Day in AK = \$137 Million to the states economy

Region	Jobs
Far North	375
Interior	8,500
Southcentral	20,700
Southwest	1,800
Southeast	11,950





Do you want to see Mat-Su with a world-class trail and park system?

How you can help:

- Help us leverage our existing finding by becoming a donor or corporate sponsor
- Participate in our activities-daycation hikes and trail days
- Follow and promote us on facebook
- Share your photos of Mat-Su adventures with us
- Apply to serve on our board or a committee
- Sign up for our Mobile App and give us feedback
- Support other organizations who also support trail and park development



The City of Palmer Priorities 2012 plan

- 82% of respondents said walking and hiking trails were the most important need for recreational facilities and they would support increased funding to support trail and park development



Prioritized needs from the plan

- Multi-use trails to enhance connectivity within the community
- Multi-use trails that connect to regional trails outside the community
- Improve community parks and park amenities
- Develop a city park and trail signage program

