

Transportation Planning & Funding

In the Mat-Su is about to change

MPO

MATSU Valley Planning (MVP) for Transportation

Metropolitan
Planning Organization



What is a Metropolitan Planning Organization (MPO)

An MPO is an organization created to carry out the transportation planning process within a metropolitan area. The MPO is the policy board, designated by the Governor, and carries out a continuing, cooperative and comprehensive performance-based multimodal transportation planning process, including the development of a Metropolitan Transportation Plan (MTP) and a Transportation Improvement Program (TIP). This process is done in cooperation with the State and public transportation operators and under the guidance of a robust public participation plan. Federal legislation passed in 1962 requires that any Urbanized Area (UZA) with a population greater than 50,000 will create a Metropolitan Planning Organization. The definition of “urban” is defined by development density within or outside of municipal limits, meaning that unincorporated areas surrounding municipalities are also defined as part of an urbanized area, just as areas outside the cities of Wasilla and Palmer are part of the urban cluster.

Why do we need an MPO?

Our Population is growing and because of that, the Federal Government requires we form one.



The Department of Commerce

will designate a portion of the Mat-Su as a Qualifying Urban Area, with a population "cluster" of over 50,000 for Census 2020. An official Metropolitan Planning Organization (MPO) must be established in the Mat-Su area to continue to receive Federal Highway Funding.

April 2022- expected census designation

INTRODUCTION

What does an MPO do?

"BY LAW, THE MPO IS DEFINED AS THE POLICY BOARD COMPRISED OF LOCAL OFFICIALS."

- ✓ Carries out transportation planning activities-based on population growth and community need
- ✓ Directs State and Federal Funds for road/transportation projects for motorized and non-motorized users
- ✓ Allows for local control of transportation decisions
- ✓ **Engages the public** in transportation planning and projects

Organized

- How is the MPO organized?

A non-profit Organization or Corporation. Governance is managed by a board of directors- but the board of directors are made up of elected officials of the regional governments and policy makers of transportation NGO's

- State/Borough/City/Tribes

Each entity will have representation on the policy board and together they will review and approve recommendations from MPO staff and the Technical Committee about the transportations infrastructure needed to support the communities needs.

Then the State of Alaska will allocate State and Federal funding to develop the projects within the MPO boundary

Policy Board

- Policy Board must consist of units of local government who represent a minimum of 75% of the existing metropolitan planning area population. (including largest incorporated city)

Pre-MPO has recommended:

Policy board consisting of:

- Palmer
- MSB (3)
- Wasilla
- AK DOT
- Knik Tribe Representative
 - Chickaloon Village

Technical Committee Consisting of:

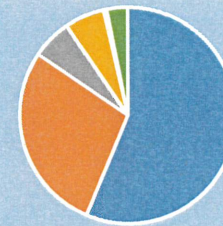
- Representatives such as planners, engineers, and other specialists from the city of Palmer City of Wasilla, MSB Planning and Public Works
 - ADOT & PF Planning and Pre-Construction
 - ADEC Air Quality Division
 - Alaska Railroad Corporation
 - Trucking industry Advocate
 - Mat-Su Road Service Area Advisory Board Chair
 - Public transit Provider
 - Mat-Su School District Operations
 - Knik Tribe
 - Chickaloon Native Village
 - Trails and Parks Representative

Federal Funding

- How much MONEY does Alaska get from Federal Highway Administration?

NHPP	\$306,715,836
STP	\$153,320,470
HSIP	\$32,384,409
CMAQ	\$29,076,413
Planning	\$2,402,700
Freight	\$17,206,531

FFY19 FAST Act Funding For Alaska



■ NHPP ■ STP ■ HSIP ■ CMAQ ■ Planning ■ Freight

Acronyms

NHPP – National Highway Performance Program STP – Surface Transportation Program HSIP – Highway Safety Improvement Program
CMAQ – Congestion Mitigation & Air Quality FAST – Fixing America's Surface Transportation STBGP - Surface Transportation Block Grant

MPO Statewide Allocation

- Communities >5000-200,000 \$31.2 M
 - ✓ Juneau
 - ✓ Sitka
 - ✓ Ketchikan
 - ✓ Wasilla
 - ✓ Kenai
 - ✓ Kodiak
 - ✓ Bethel
 - ✓ Palmer
 - ✓ Homer
 - ✓ Soldotna
- Communities >50,000<200,000 \$8.3 M
 - ✓ Fairbanks
- Communities > 200,000 \$27.3 M
 - ✓ Anchorage

Types of MPO Hosting

- **Independent MPO**

This is a truly independent agency. The MPO must meet all of its operating needs by itself. The most expensive type of MPO. Provides all payroll costs, administrative and capital needs.

- **Leaning Independent**

Independent MPO that “leans” on one of its members for support. The MPO receives some services under a severable contract.

- **Component MPO**

This type of hosting relationship, the MPO functions are separated from all other functions of the host. (Department or Division)

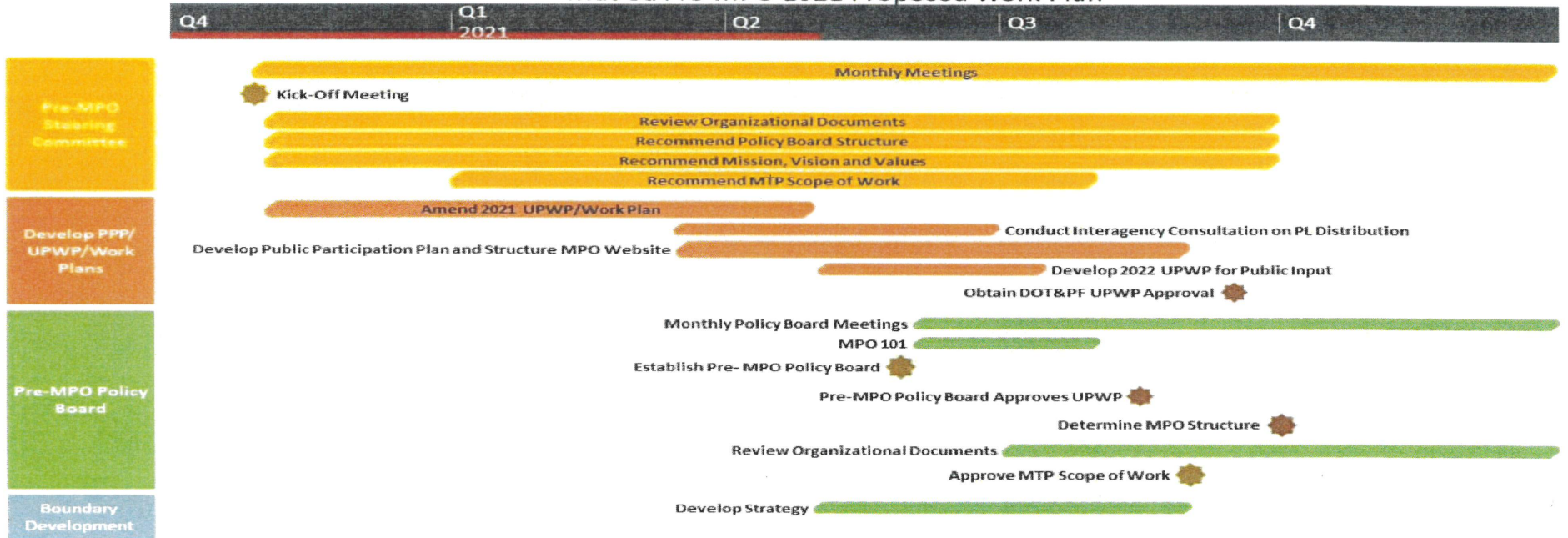
- **Dual Purpose MPO**

This type of hosting relationship, the host leverages MPO planning funds to maintain transportation planning staff. Performs both MPO planning and local government transportation planning functions.

- **All-In-One Agency**

This type of agency does not differentiate between MPO functions, non-MPO transportation functions and all other functions of the broader agency.

Mat-Su Pre-MPO 2021 Proposed Work Plan



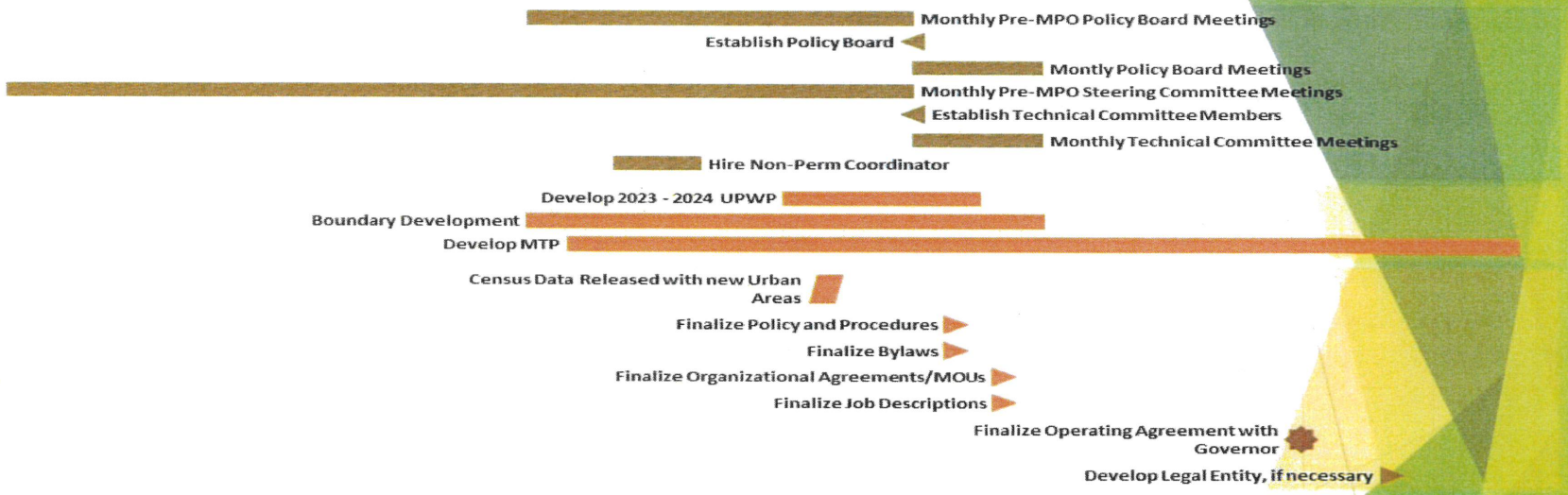
Amended 05/02/2021

Q4 | Q1 2021 | Q2 | Q3 | Q4 | Q1 2022 | Q2 | Q3 | Q4 | Q1 2023 | Q2 | Q3

Populate the Organization

Develop Required Plans

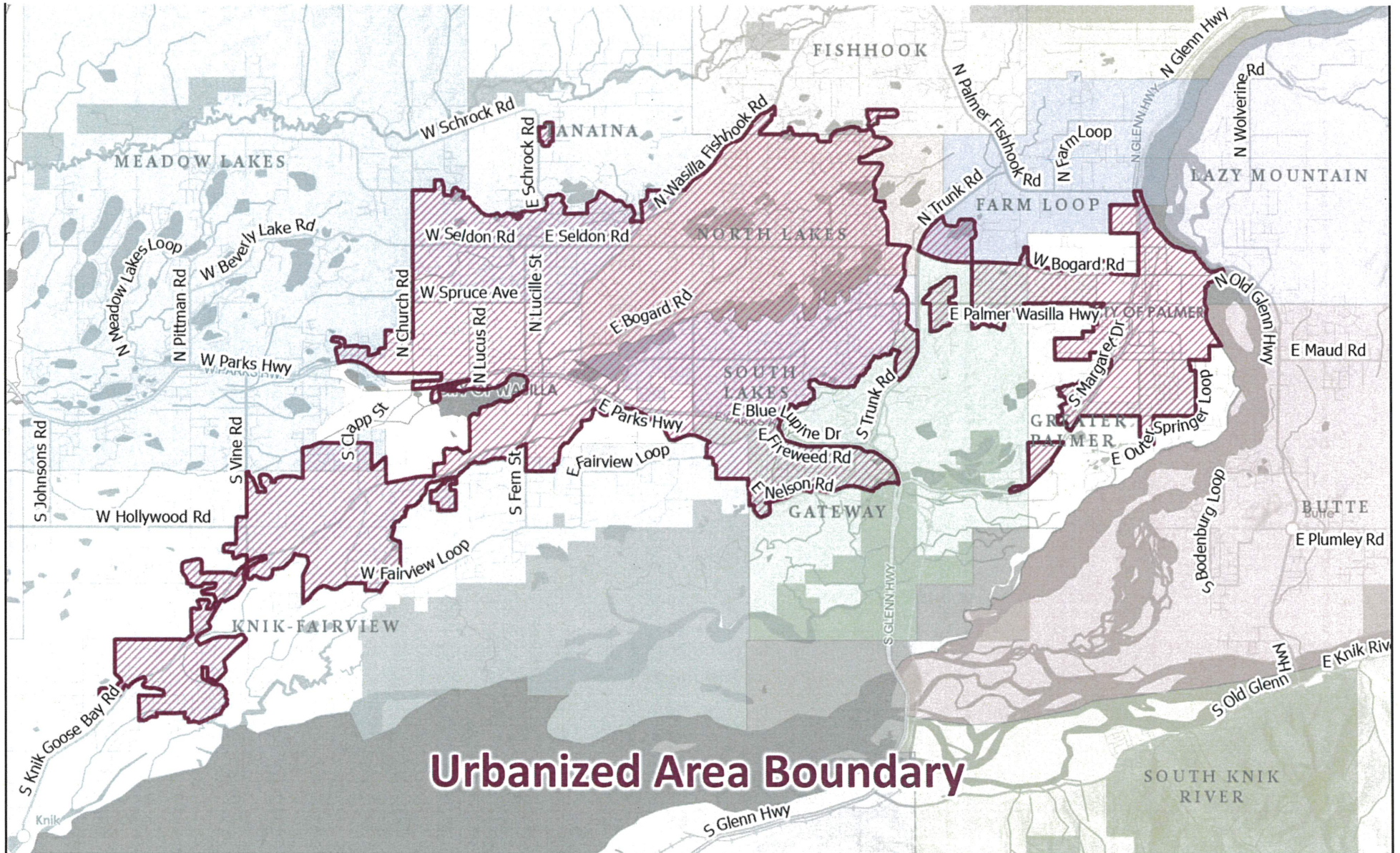
Develop MPO Organization



2022 Mat-Su MPO Draft Work Plan

Strategy of Boundary Development

- Consider 2010 and 2020 Census Data
- Consider where people are moving (where are they building?)
- Where will the growth occur in the next 20 years?
- Consider any available models, forecasts and GIS mapping scenarios
- Consider road miles of each area
- Consider air quality conditions
- Consult subject matter experts (Platting, Planning, Zoning, Real Estate, Economist)



Urbanized Area Boundary