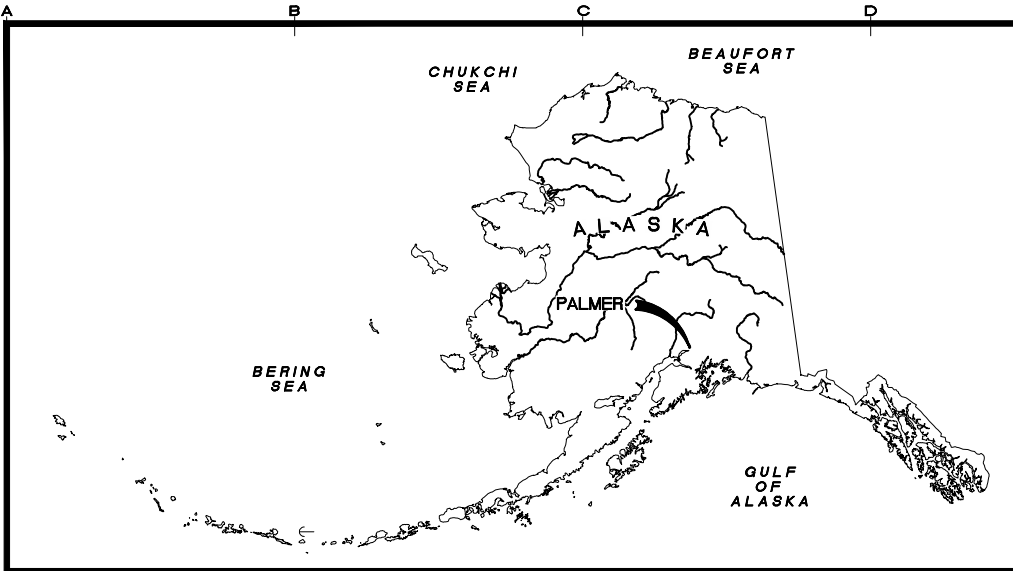


DRAWING LOCATION: H:\Jobs\21-016\Palmer_2021_Pavement_Repairs (COP)\CAD\Drawings\21016_XL_G101.dwg TV01GHT DATE TIME: 3/2/2022 7:56 AM LAYOUT: 6101



SHEET INDEX

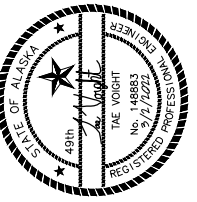
G1.01	COVER
G1.02	SITE PLAN
C1.01	DETAILS
C2.01	PROJECT LAYOUT PLAN SITE 1 & 2
C2.02	PROJECT LAYOUT PLAN SITE 3 & 4
C2.03	PROJECT LAYOUT PLAN SITE 4
C2.04	PROJECT LAYOUT PLAN SITE 5 & 6
C2.05	PROJECT LAYOUT PLAN SITE 7

CITY OF PALMER

2022 PAVEMENT REPAIRS

PALMER, ALASKA

REVISIONS	MARK	DATE	DESCRIPTION
	1		
	2		
	3		
	4		
	5		



HDL ENGINEERING
Consultants LLC
 civil - geotechnical - surveying - environmental - material testing
 ANCHORAGE
 907.564.2120
 3335 Arctic Boulevard, Suite 100 Anchorage, AK 99503
 www.HDLalaska.com
 AECL861

ABBREVIATIONS

AC	ASPHALT CONCRETE
APPROX	APPROXIMATELY
ARRC	ALASKA RAILROAD CORPORATION
ASTM	AMERICAN STANDARD TESTING MATERIALS
ADOT&PF	ALASKA DEPARTMENT OF TRANSPORTATION AND PUBLIC FACILITIES
BV	BUTTERFLY VALVE
CL	CENTERLINE
CL	CLASS
CMP	CORRUGATED METAL PIPE
CONT'D	CONTINUED
CPEP	CORRUGATED POLYETHYLENE PIPE
CPSS	CITY OF PALMER STANDARD SPECIFICATIONS
CY	CUBIC YARD
D	DEGREE
DEMO	DEMOLISH
DIA	DIAMETER
E	EASTING
EA	EACH
EL	ELEVATION
ELEC	ELECTRICAL
ELEV	ELEVATION
EW	EACH WAY
EXIST	EXISTING
FG	FINISH GRADE
FO	FIBER OPTIC
F&I	FURNISH AND INSTALL
HMA	HOT MIX ASPHALT
HORIZ	HORIZONTAL
L	LENGTH
LT	LEFT
LF	LINEAR FEET
MAX	MAXIMUM
MEA	MATANUSKA ELECTRIC ASSOCIATION
MH	MANHOLE
MIN	MINIMUM
MSB	MATANUSKA SUSITNA BOROUGH
N	NORTH OR NORTHING
NE	NORTHEAST
NFS	NON FROST SUSCEPTIBLE

ABBREVIATIONS (CONT'D)

NIC	NOT IN CONTRACT
NO.	NUMBER
NTS	NOT TO SCALE
OC	ON CENTER
OSHA	OCCUPATIONAL SAFETY AND HEALTH ADMINISTRATION
PT	POINT OF TANGENCY
PW	PATHWAY
PVMT	PAVEMENT
R	RADIUS
REINF	REINFORCEMENT
REQ'D	REQUIRED
ROW	RIGHT-OF-WAY
RT	RIGHT
S	SOUTH
SCH	SCHEDULE
SD	STORM DRAIN
SF	SQUARE FOOT
SIM	SIMILAR
SS	STAINLESS STEEL
SSCO	SANITARY SEWER CLEANOUT
SSMH	SANITARY SEWER MANHOLE
STA	SURVEY STATION
SW	SOUTHWEST, SIDEWALK
T	TANGENT
TELE	TELEPHONE
TCP	TEMPORARY CONSTRUCTION PERMIT
TYP	TYPICAL
UGE	UNDERGROUND ELECTRIC
UNO	UNLESS NOTED OTHERWISE

LEGEND

	EXISTING FIRE HYDRANT
	SANITARY SEWER MANHOLE
	EXISTING FENCE
	EDGE OF EXISTING PAVEMENT
	PAVEMENT LIMITS
	PROPERTY LINE

PROJECT NOTES

1. ALL CONSTRUCTION SHALL BE PERFORMED IN ACCORDANCE WITH THE CITY OF PALMER STANDARD SPECIFICATIONS FOR STREETS – DRAINAGE – UTILITIES – PARKS (DATED 2018) AND THE SPECIAL PROVISIONS PREPARED FOR THIS CONTRACT.
2. THE CONTRACTOR AGREES THAT, IN ACCORDANCE WITH GENERALLY ACCEPTED CONSTRUCTION PRACTICES AND THE GENERAL REQUIREMENTS, THE CONTRACTOR WILL BE REQUIRED TO ASSUME SOLE AND COMPLETE RESPONSIBILITY FOR JOB SITE CONDITIONS DURING THE COURSE OF CONSTRUCTION OF THE PROJECT, INCLUDING SAFETY OF ALL PERSONS AND PROPERTY. THIS REQUIREMENT SHALL BE MADE TO APPLY CONTINUOUSLY AND NOT BE LIMITED TO NORMAL WORKING HOURS.
3. THE CONTRACTOR SHALL ACCEPT THE SITE IN ITS PRESENT CONDITION.
4. OTHER CONTRACTORS OR THE UTILITY COMPANIES MAY BE WORKING ON THE SAME PROJECT SITE OR IN THE VICINITY DURING THE PROGRESS OF THIS CONTRACT'S WORK. CONTRACTOR SHALL COORDINATE HIS WORK WITH ALL OTHER CONTRACTORS OR UTILITY COMPANIES WORKING IN THE AREA.
5. CONTRACTOR SHALL COMPLY WITH THE REQUIREMENTS OF THE INTERNATIONAL BUILDING CODE, STATE AND FEDERAL OCCUPATIONAL HEALTH ADMINISTRATIONS (OSHA), AND ALL OTHER FEDERAL, STATE AND LOCAL LAWS, REGULATIONS AND PERMIT CONDITIONS PERTAINING TO THIS PROJECT. ANY WORK PERFORMED BY THE CONTRACTOR CONTRARY TO SUCH LAWS, REGULATIONS OR CONDITIONS SHALL BE AT THE CONTRACTOR'S SOLE RISK AND EXPENSE.
6. THE CONTRACTOR SHALL PROVIDE ALL PERMITS WHICH ARE NOT SPECIFICALLY INDICATED AS PROVIDED BY THE OWNER IN THE CONTRACT DOCUMENTS.
7. ALL SURVEYING AND LAYOUT SHALL BE PROVIDED BY THE CONTRACTOR UNLESS NOTED OTHERWISE.
8. WORK ITEM LIMITS ARE APPROXIMATE. CONTRACTOR SHALL VERIFY ALL DIMENSIONS AND LAYOUT PRIOR TO PROCEEDING WITH THE WORK BY PERFORMING AN INITIAL WALKTHROUGH WITH THE OWNER AND THE ENGINEER. ANY DISCREPANCY IN THE PLANS SHALL BE BROUGHT TO THE ATTENTION OF THE ENGINEER PRIOR TO PROCEEDING WITH THE WORK.
9. EXISTING BURIED AND ABOVE GRADE UTILITIES ARE NOT SHOWN. THE CONTRACTOR SHALL CONTACT THE LOCATE CALL CENTER OF ALASKA, AS WELL AS ANY NON-PARTICIPATING UTILITIES, INCLUDING THE CITY OF PALMER PUBLIC WORKS, TO FIELD FIELD LOCATE ALL UTILITIES PRIOR TO DIGGING. ANY DISCREPANCIES SHALL BE BROUGHT TO THE ATTENTION OF THE ENGINEER PRIOR TO DIGGING, OTHERWISE CONTRACTOR IS RESPONSIBLE FOR ALL ADDITIONAL COSTS ASSOCIATED WITH WORKING AROUND UTILITIES DIFFERENT THAN WHAT IS SHOWN ON THESE PLANS.
10. THE CONTRACTOR SHALL ESTABLISH, PROVIDE, AND MAINTAIN EFFECTIVE QUALITY CONTROL IN ACCORDANCE WITH DIVISION 10.
11. THE CONTRACTOR SHALL PROVIDE ALL LIGHTS, SIGNS, BARRICADES, FLAG MEN OR OTHER DEVICES NECESSARY TO PROVIDE FOR SAFETY.
12. TRAFFIC RESTRICTIONS ARE NOT ALLOWED DURING THE ALASKA STATE FAIR. SEE CPSS 10.4 ARTICLE 4.12 AS MODIFIED BY THE SPECIAL PROVISIONS.

SCOPE OF WORK

ALL WORK NECESSARY TO CONSTRUCT PAVEMENT REPAIRS, INCLUDING LABOR, MATERIALS, EQUIPMENT, COORDINATION AND QUALITY CONTROL/ASSURANCE AS SHOWN ON THE DRAWINGS AND AS SPECIFIED.

CALL BEFORE YOU DIG!

THE CONTRACTOR SHALL NOTIFY ALL AREA UTILITY COMPANIES PRIOR TO COMMENCEMENT OF EXCAVATION

LOCATE CALL CENTER OF ALASKA 1-800-478-3121
CITY OF PALMER PUBLIC WORKS 745-3400

2022 PAVEMENT REPAIRS

CITY OF PALMER

PALMER, ALASKA

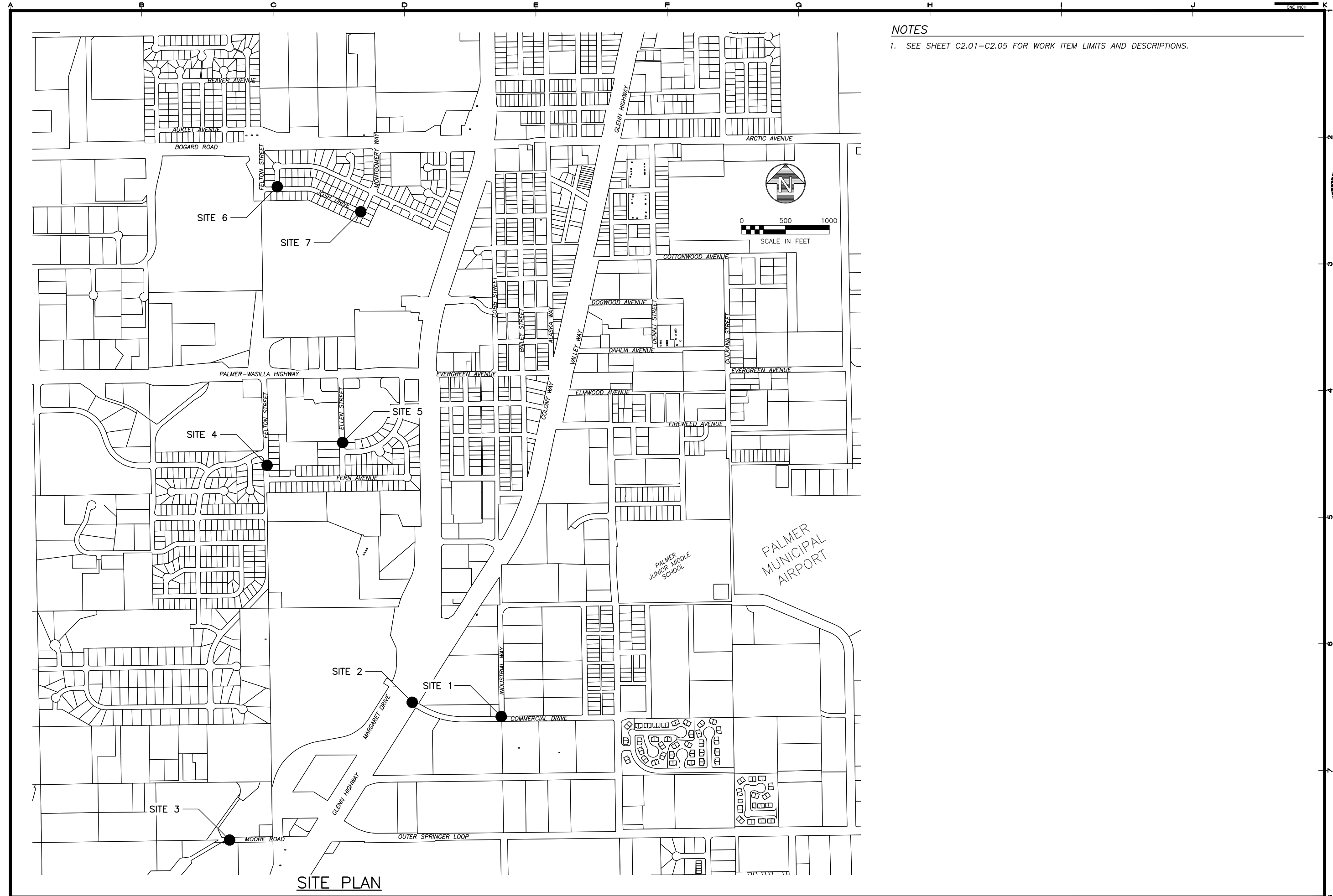
SHEET TITLE COVER	
SHEET G1.01	
DRAWN BY: TV	CHECKED BY: DL
DATE: MAR. 2022	SCALE:
JOB NUMBER: 21-016	

LAYOUT
G102

DATE TIME
3/2/2022 8:00 AM

TV01.GBT

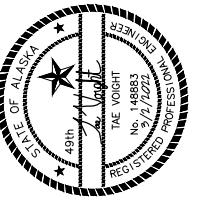
DRAWING LOCATION
H:\Jobs\21-016\Palmer\2021 Pavement Repairs (COP)\CAD\Drawings\21016_XL_G102.dwg



NOTES

1. SEE SHEET C2.01-C2.05 FOR WORK ITEM LIMITS AND DESCRIPTIONS.

REVISIONS	MARK	DATE	DESCRIPTION
1			
2			
3			
4			
5			



HDL ENGINEERING Consultants LLC
 civil - geotechnical - surveying - environmental - material testing
 ANCHORAGE
 907.564.2120
 3335 Arctic Boulevard, Suite 100 Anchorage, AK 99503
 www.HDLalaska.com
 TAE VOIGHT
 No. 174883
 REGISTERED PROFESSIONAL ENGINEER

2022 PAVEMENT REPAIRS
CITY OF PALMER
 PALMER, ALASKA

SHEET TITLE
 SITE PLAN

SHEET
G1.02

DRAWN BY: TV
 CHECKED BY: DL

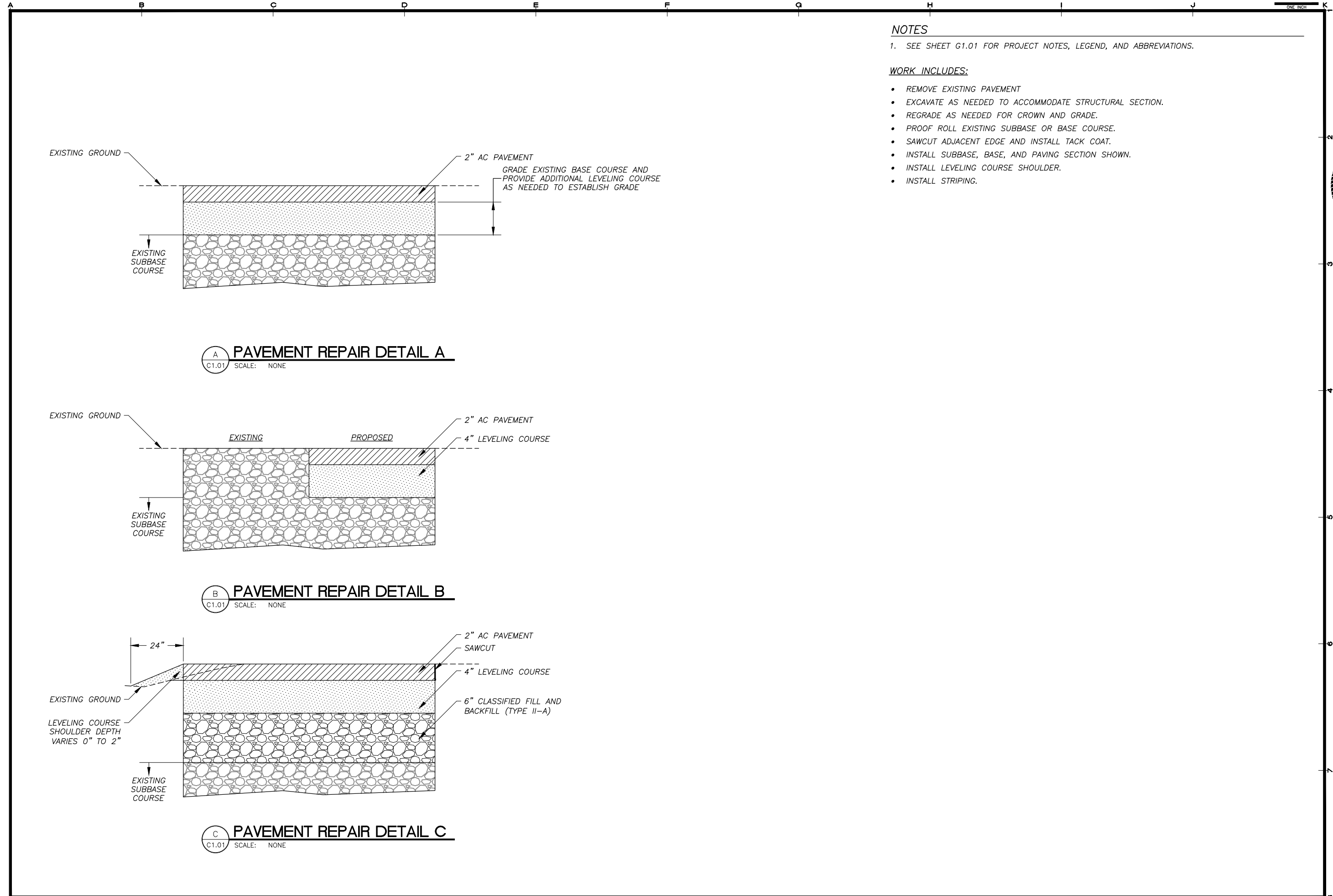
DATE: MAR 2022
 SCALE: 1" = 500'

JOB NUMBER: 21-016

LAYOUT
C1.01

DATE TIME
3/2/2022 8:02 AM

DRAWING LOCATION
H:\Jobs\21-016 Palmer 2021 Pavement Repairs (COP)\CAD\Drawings\21016_XL_C1.01.dwg TV01.GBT



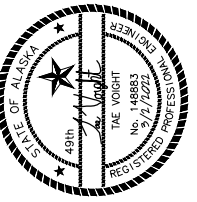
NOTES

1. SEE SHEET G1.01 FOR PROJECT NOTES, LEGEND, AND ABBREVIATIONS.

WORK INCLUDES:

- REMOVE EXISTING PAVEMENT
- EXCAVATE AS NEEDED TO ACCOMMODATE STRUCTURAL SECTION.
- REGRADE AS NEEDED FOR CROWN AND GRADE.
- PROOF ROLL EXISTING SUBBASE OR BASE COURSE.
- SAWCUT ADJACENT EDGE AND INSTALL TACK COAT.
- INSTALL SUBBASE, BASE, AND PAVING SECTION SHOWN.
- INSTALL LEVELING COURSE SHOULDER.
- INSTALL STRIPING.

REVISIONS	MARK	DATE	DESCRIPTION
1			
2			
3			
4			
5			



HDL ENGINEERING Consultants LLC
 civil - geotechnical - surveying - environmental - material testing
 ANCHORAGE
 907.564.2120
 3335 Arctic Boulevard, Suite 100 Anchorage, AK 99503
 www.HDLalaska.com
 MAT-SU
 907.746.5230

2022 PAVEMENT REPAIRS
CITY OF PALMER
 PALMER, ALASKA

SHEET TITLE
 DETAILS

SHEET
C1.01

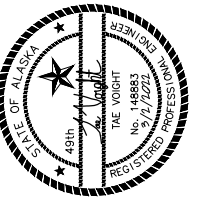
DRAWN BY: TV CHECKED BY: DL
 DATE: MAR. 2022 SCALE:
 JOB NUMBER: 21-016

A B C D E F G H I J K ONE INCH

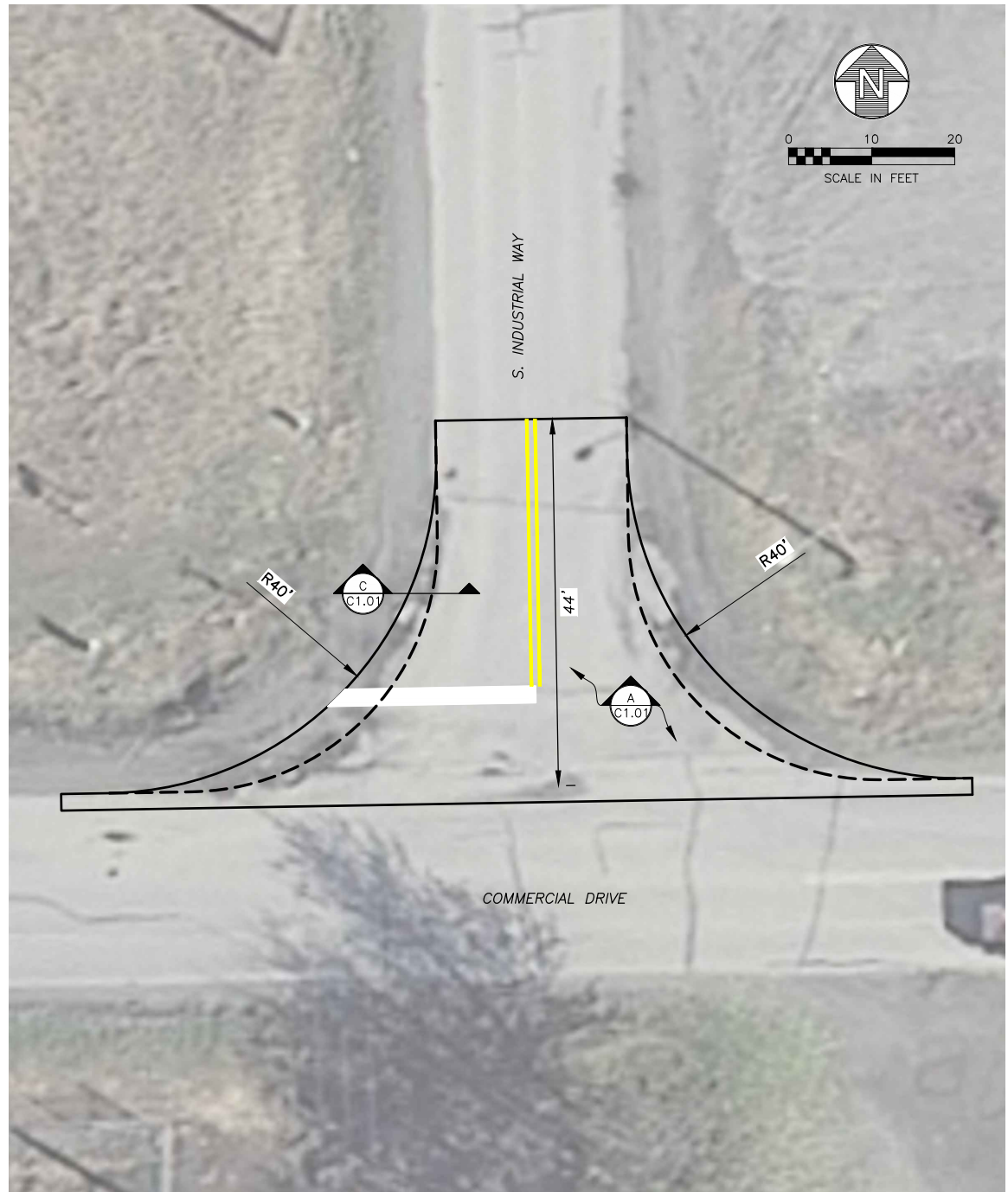
NOTES

1. SEE SHEET G1.01 FOR PROJECT NOTES, LEGEND, AND ABBREVIATIONS.
2. WORK ITEM LOCATIONS ARE APPROXIMATE. COORDINATE FINAL LOCATIONS, DIMENSIONS, AND LAYOUT WITH OWNER AND ENGINEER IN THE FIELD.
3. MATCH EXISTING GRADES AND ELEVATIONS.

REVISIONS	MARK	DATE	DESCRIPTION
1			
2			
3			
4			
5			



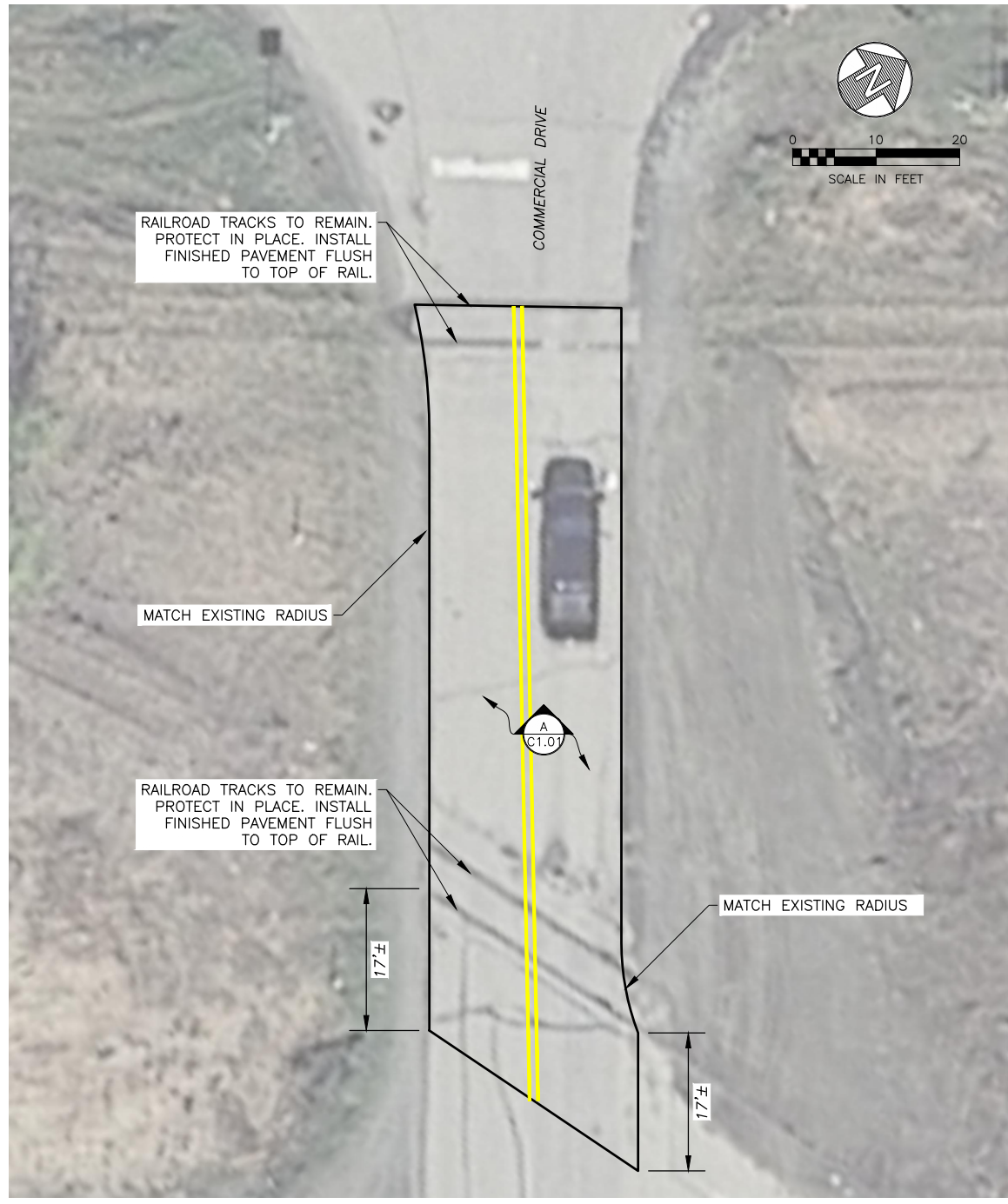
HDL ENGINEERING Consultants LLC
 civil - geotechnical - surveying - environmental - material testing
 ANCHORAGE
 907.564.2120
 MAT-SU
 907.746.5230
 3335 Arctic Boulevard, Suite 100 Anchorage, AK 99503
 www.HDLalaska.com
 AECL861



SITE 1

SITE 1 QUANTITIES INCLUDE:

- 137 LF OF SAWCUTTING
- 180 SY OF REMOVE AND REPLACE ASPHALT SURFACING
- 180 SY OF GRADE EXISTING SURFACE
- LEVELING COURSE, AS NEEDED
- TYPE II-A, AS NEEDED
- REPLACE EXISTING TRAFFIC MARKINGS PER STANDARD DETAIL 70-6, AND 70-7.



SITE 2

SITE 2 QUANTITIES INCLUDE:

- 72 LF OF SAWCUTTING
- 247 SY OF REMOVE AND REPLACE ASPHALT SURFACING, INCLUDING BETWEEN RAILROAD TRACKS
- 247 SY OF GRADE EXISTING SURFACE
- REPLACE EXISTING TRAFFIC MARKINGS PER STANDARD DETAIL 70-6, AND 70-7.

2022 PAVEMENT REPAIRS
CITY OF PALMER
 PALMER, ALASKA

SHEET TITLE
 PROJECT LAYOUT
 PLAN
 SITE 1 & 2

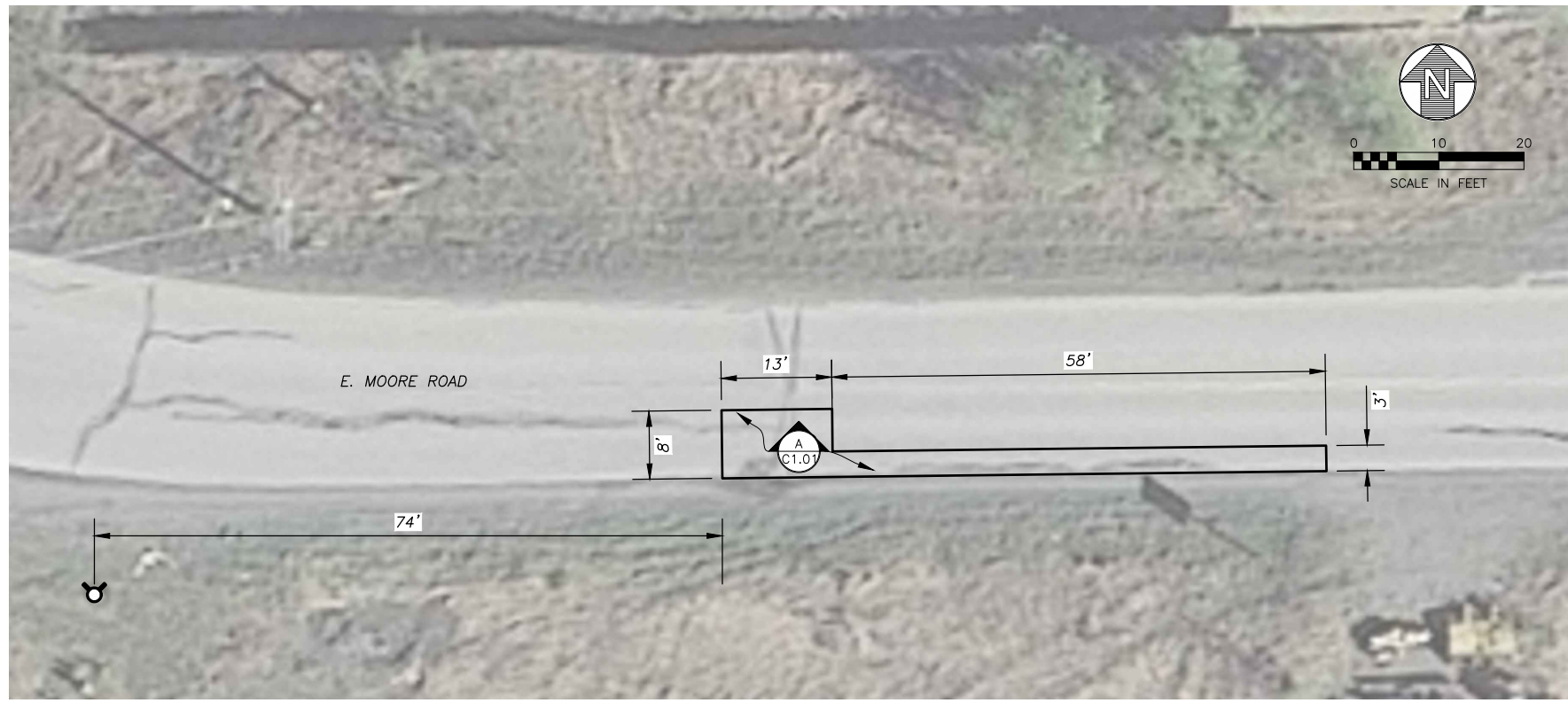
SHEET
C2.01

DRAWN BY: TV CHECKED BY: DL
 DATE: MAR. 2022 SCALE:
 JOB NUMBER: 21-016

LAYOUT
C2.02

DATE TIME
3/2/2022 8:16 AM

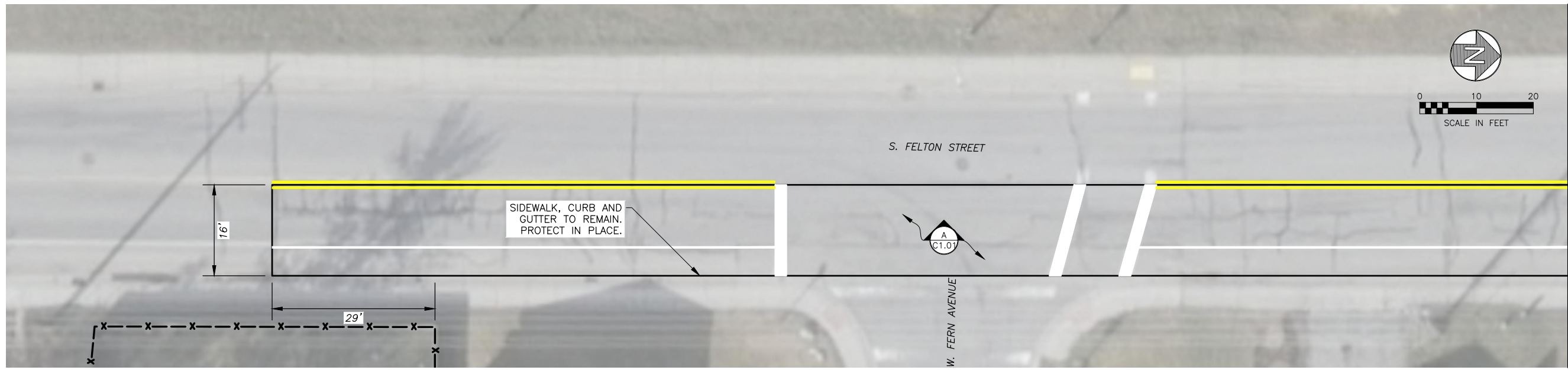
DRAWING LOCATION
H:\Jobs\21-016 Palmer- 2021 Pavement Repairs (COP)\CADD\Drawings\21016_XL_C201.dwg TV01GHT



SITE 3

SITE 3 QUANTITIES INCLUDE:

- 87 LF OF SAWCUTTING
- 31 SY OF REMOVE AND REPLACE ASPHALT SURFACING
- 31 SY OF GRADE EXISTING SURFACING



SITE 4

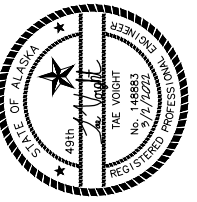
SITE 4 QUANTITIES INCLUDE:

- 670 LF OF SAWCUTTING
- 1,131 SY OF REMOVE AND REPLACE ASPHALT SURFACING
- 1,131 SY OF GRADE EXISTING SURFACING
- LEVELING COURSE, AS NEEDED
- TYPE II-A, AS NEEDED
- REPLACE EXISTING TRAFFIC, CROSSWALK, STOPBAR AND BIKE LANE MARKINGS PER STANDARD DETAIL 70-6, 70-7, AND 70-14.

NOTES

1. SEE SHEET G1.01 FOR PROJECT NOTES, LEGEND, AND ABBREVIATIONS.
2. WORK ITEM LOCATIONS ARE APPROXIMATE. COORDINATE FINAL LOCATIONS, DIMENSIONS, AND LAYOUT WITH OWNER AND ENGINEER IN THE FIELD.
3. MATCH EXISTING GRADES AND ELEVATIONS.

REVISIONS	MARK	DATE	DESCRIPTION
1			
2			
3			
4			
5			



HDL ENGINEERING Consultants LLC
 civil - geotechnical - surveying - environmental - material testing
 ANCHORAGE
 907.564.2120
 3335 Arctic Boulevard, Suite 100 Anchorage, AK 99503
 www.HDLalaska.com
 AECL861

2022 PAVEMENT REPAIRS
CITY OF PALMER
 PALMER, ALASKA

SHEET TITLE
 PROJECT LAYOUT
 PLAN
 SITE 3 & 4

SHEET
C2.02

DRAWN BY: TV	CHECKED BY: DL
DATE: MAR. 2022	SCALE:
JOB NUMBER: 21-016	

MATCHLINE - SEE C2.03

LAYOUT
C2.03

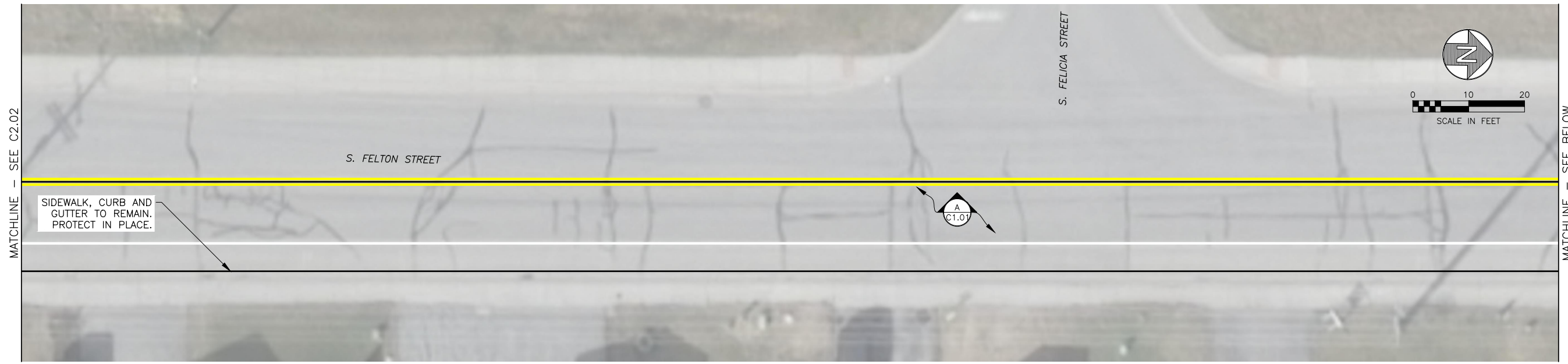
DATE TIME
3/2/2022 8:16 AM

DRAWING LOCATION
H:\Jobs\21-016 Palmer- 2021 Pavement Repairs (COP)\CADD\Drawings\21016_XL_C201.dwg TV01.GHT

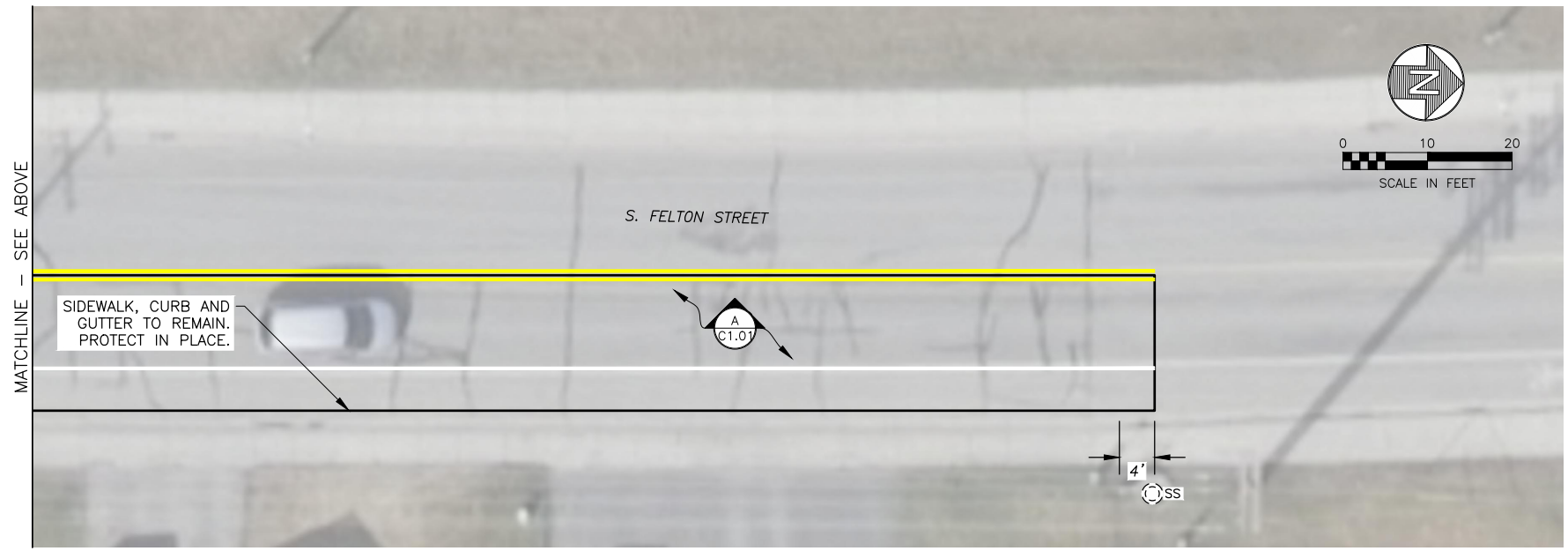
A B C D E F G H I J K ONE INCH

NOTES

1. SEE SHEET G1.01 FOR PROJECT NOTES, LEGEND, AND ABBREVIATIONS.
2. WORK ITEM LOCATIONS ARE APPROXIMATE. COORDINATE FINAL LOCATIONS, DIMENSIONS, AND LAYOUT WITH OWNER AND ENGINEER IN THE FIELD.
3. MATCH EXISTING GRADES AND ELEVATIONS.



SITE 4

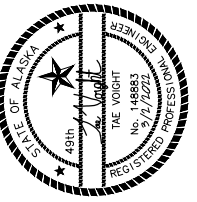


SITE 4

SITE 4 QUANTITIES INCLUDE:

- SEE SHEET C2.02.

REVISIONS	MARK	DATE	DESCRIPTION
	1		
	2		
	3		
	4		
	5		



HDL ENGINEERING Consultants LLC
 civil - geotechnical - surveying - environmental - material testing
 ANCHORAGE
 907.564.2120
 3335 Arctic Boulevard, Suite 100 Anchorage, AK 99503
 www.HDLalaska.com
 MAT-SU
 907.746.5230

2022 PAVEMENT REPAIRS
CITY OF PALMER
 PALMER, ALASKA

SHEET TITLE
 PROJECT LAYOUT
 PLAN
 SITE 4

SHEET
C2.03

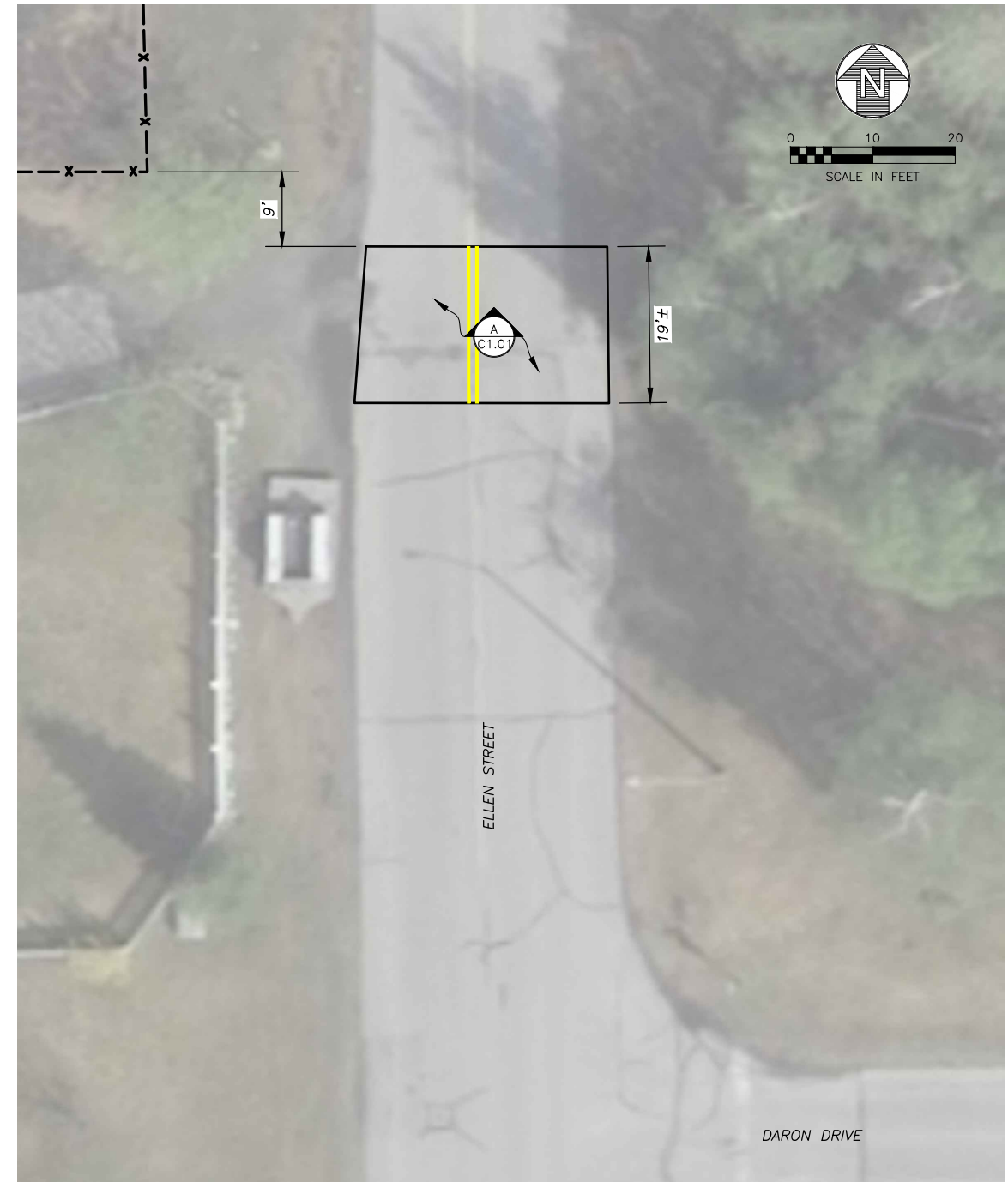
DRAWN BY: TV CHECKED BY: DL
 DATE: MAR. 2022 SCALE:
 JOB NUMBER: 21-016

2
3
4
5
6
7

LAYOUT
C204

DATE TIME
3/2/2022 8:16 AM

DRAWING LOCATION
H:\Jobs\21-016 Palmer- 2021 Pavement Repairs (COP)\CAD\Drawings\21016_XL_C201.dwg TV01.GHT



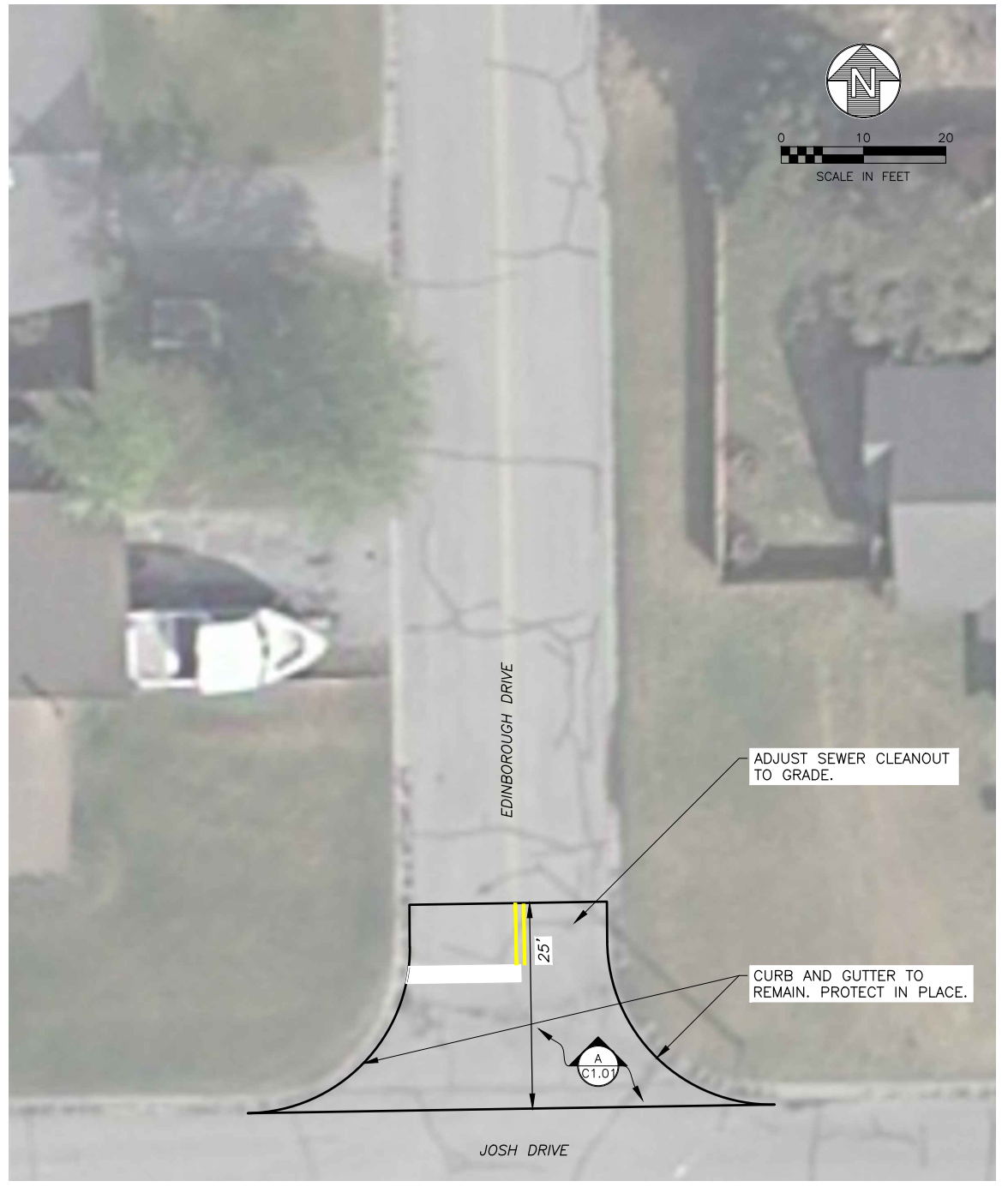
SITE 5

SITE 5 QUANTITIES INCLUDE:

- 61 LF OF SAWCUTTING
- 63 SY OF REMOVE AND REPLACE ASPHALT SURFACING
- 63 SY OF GRADE EXISTING SURFACE
- REPLACE EXISTING TRAFFIC MARKINGS PER STANDARD DETAIL 70-6, AND 70-7.

NOTES

1. SEE SHEET G1.01 FOR PROJECT NOTES, LEGEND, AND ABBREVIATIONS.
2. WORK ITEM LOCATIONS ARE APPROXIMATE. COORDINATE FINAL LOCATIONS, DIMENSIONS, AND LAYOUT WITH OWNER AND ENGINEER IN THE FIELD.
3. MATCH EXISTING GRADES AND ELEVATIONS.

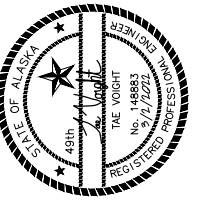


SITE 6

SITE 6 QUANTITIES INCLUDE:

- 88 LF OF SAWCUTTING
- 86 SY OF REMOVE AND REPLACE ASPHALT SURFACING
- 86 SY OF GRADE EXISTING SURFACE
- ADJUST EXISTING SEWER CLEANOUT
- REPLACE EXISTING TRAFFIC MARKINGS PER STANDARD DETAIL 70-6, AND 70-7.

REVISIONS	MARK	DATE	DESCRIPTION
1			
2			
3			
4			
5			



HDL ENGINEERING Consultants LLC
 civil - geotechnical - surveying - environmental - material testing
 ANCHORAGE
 907.564.2120
 MAT-SU
 907.746.5230
 3335 Arctic Boulevard, Suite 100 Anchorage, AK 99503
 www.HDLalaska.com
 AECL861

2022 PAVEMENT REPAIRS
CITY OF PALMER
 PALMER, ALASKA

SHEET TITLE
 PROJECT LAYOUT
 PLAN
 SITE 5 & 6

SHEET
C2.04

DRAWN BY: TV CHECKED BY: DL
 DATE: MAR. 2022 SCALE:
 JOB NUMBER: 21-016

LAYOUT
C205

DATE TIME
3/2/2022 8:16 AM

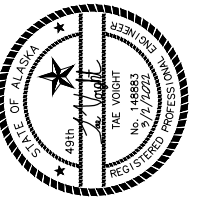
DRAWING LOCATION
H:\Jobs\21-016 Palmer\2021 Pavement Repairs (COP)\CAD\Drawings\21016_XL_C201.dwg TV01.GHT

A B C D E F G H I J K ONE INCH

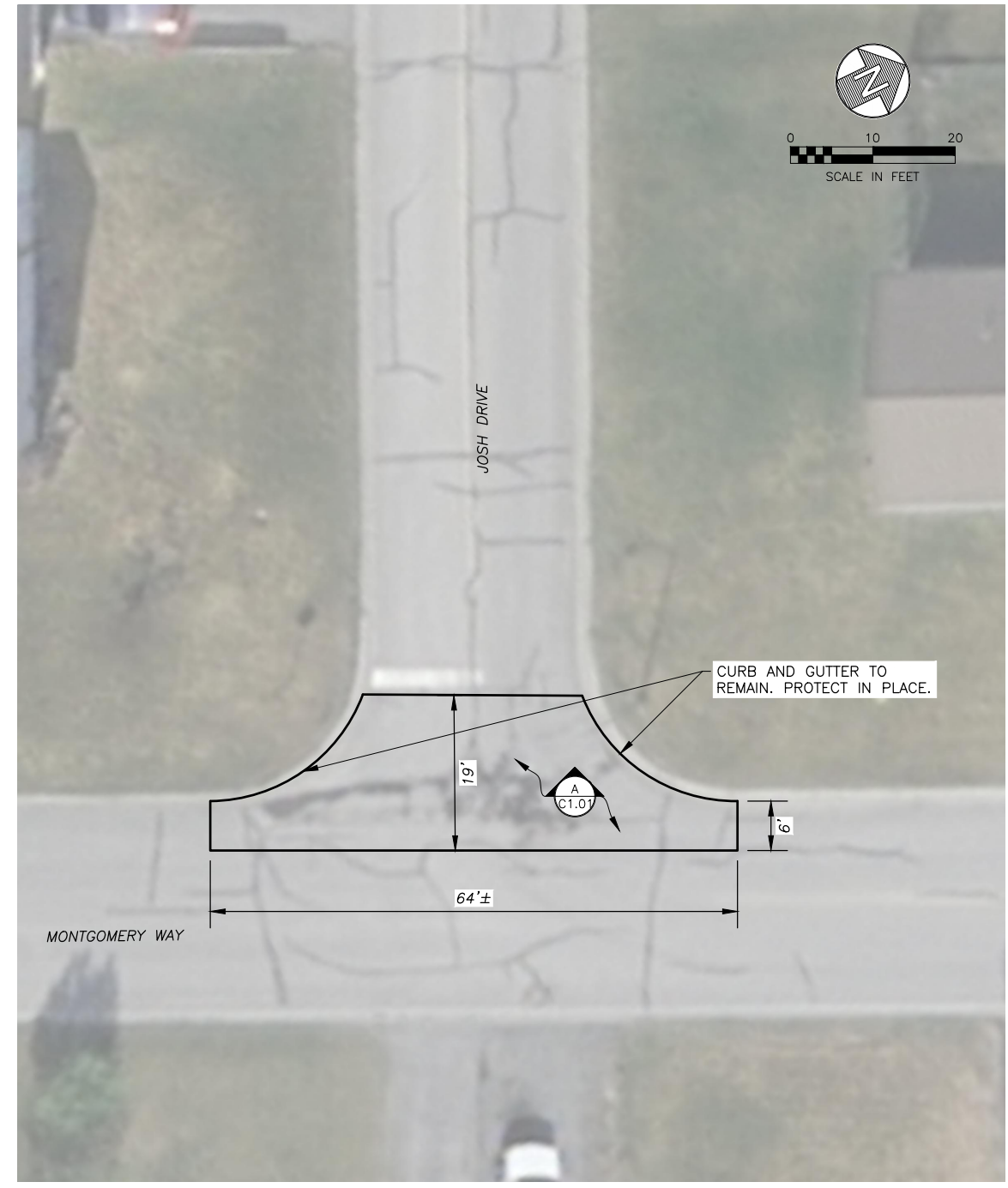
NOTES

1. SEE SHEET G1.01 FOR PROJECT NOTES, LEGEND, AND ABBREVIATIONS.
2. WORK ITEM LOCATIONS ARE APPROXIMATE. COORDINATE FINAL LOCATIONS, DIMENSIONS, AND LAYOUT WITH OWNER AND ENGINEER IN THE FIELD.
3. MATCH EXISTING GRADES AND ELEVATIONS.

REVISIONS	MARK	DATE	DESCRIPTION
	1		
	2		
	3		
	4		
	5		



HDL ENGINEERING Consultants LLC
 civil - geotechnical - surveying - environmental - material testing
 ANCHORAGE
 907.564.2120
 3335 Arctic Boulevard, Suite 100 Anchorage, AK 99503
 www.HDLalaska.com
 AECL861



SITE 7

SITE 7 QUANTITIES INCLUDE:

- 103 LF OF SAWCUTTING
- 95 SY OF REMOVE AND REPLACE ASPHALT SURFACING
- 95 SY OF GRADE EXISTING SURFACE

2022 PAVEMENT REPAIRS
CITY OF PALMER
 PALMER, ALASKA

SHEET TITLE
 PROJECT LAYOUT
 PLAN
 SITE 7

SHEET
C2.05

DRAWN BY: TV CHECKED BY: DL
 DATE: MAR. 2022 SCALE:
 JOB NUMBER: 21-016