

Date: August 18, 2022

To: All Planholders

Subject: Addendum No. 1
Construct Taxiway N, Improve Airport Drainage, and Construct Apron E
Warren "Bud" Woods Palmer Municipal Airport – City of Palmer

Civil
Engineering

This addendum consists of three (3) pages plus four (4) attachments. Attachments are as follows:

Geotechnical
Engineering

1. Revised Plan Sheet G1.01 (1 page)

2. Revised Plan Sheet D1.03 (1 page)

3. Revised Plan Sheet E1.01 (1 page)

4. Revised Plan Sheet E3.05 (1 page)

Transportation
Engineering

Bid Opening date and time remain unchanged.

Aviation
Engineering

Bidders must acknowledge the receipt of this addendum in writing on the Bid Proposal. This addendum amends and/or supplements the contract documents. Contract document provisions not specifically amended herein remain in full force and effect.

W/WW
Engineering

Questions must be submitted by 5pm on August 18, 2022. After that time contractors must bid as is.

Environmental
Services

Clarification

Clarification 1:

HMA oil price escalation is not included in the contract (SSAC Item P-401 Paragraph 401-7.2 is deleted in the project specifications).

Surveying &
Mapping

Clarification 2:

MTV is required for paving on Taxiways but not required on Apron paving (see SSAC Item P-401 Paragraph 401-4.12 as modified in the project specifications).

Construction
Administration

Clarification 3:

Material
Testing

The Environmental Site Assessment and Limited Hazardous Building Materials Inventory are available for download on the City's website for the bidder's reference.

BIDDING AND CONTRACT DOCUMENTS

A. Modifications to Division II SPECIAL PROVISIONS

Section 10.06 Legal Relations and Responsibilities, *ADD the following Article 6.21 Environmental Commitments.*

Article 6.21 Environmental Commitments

Contractor shall comply with the environmental commitments made by the Owner and FAA to qualify this project for a categorical exclusion under National Environmental Policy Act (NEPA), as follows:

1. If cultural, archaeological, or historical sites are discovered during construction, all work that may impact the sites will stop. The State Historic Preservation Office will be consulted to determine the appropriate corrective action.
2. Owner and the FAA will continue consultation and communication with Chickaloon Village Traditional Council regarding the proposed project, including advanced notice of construction activities.
3. Owner will provide access for Chickaloon Village Traditional Council to visit the proposed area of potential effect (APE) in advance of groundbreaking activities. *Complete*
4. Owner will request tribal monitors, provided by Chickaloon Village Traditional Council, during groundbreaking activities, especially if work commences near the Matanuska River bluff.
5. If contamination or hazardous materials are encountered during construction, all work in the vicinity of the contamination will stop and ADEC will be consulted to determine the appropriate corrective action.
6. If active Bald or Golden Eagle nests are found within 660 feet of the project area (primary and secondary protection zones), the USFWS would be consulted for guidance on how to proceed.
7. To minimize the risk of introducing invasive species and to comply with Executive Order 13112, ground disturbing activities will be kept to a minimum. Disturbed areas will be re-vegetated with State of Alaska Certified seed in accordance with the Alaska Department of Natural Resources Re-vegetation Manual.
8. The Contractor will be responsible for obtaining all necessary permits and clearances for material and disposal sites and borrow or equipment storage areas, including compliance with the APDES CGP for storm water discharge, unless the Owner has obtained the necessary permits. *Owner has obtained NEPA and State Historic Preservation Office clearance for work shown on the project plans and on the airport property. If Contractor deviates from what is shown on the plans, Contractor shall obtain their own permits and clearances.*

PLANS

B. Modifications to Division XIV PLANS

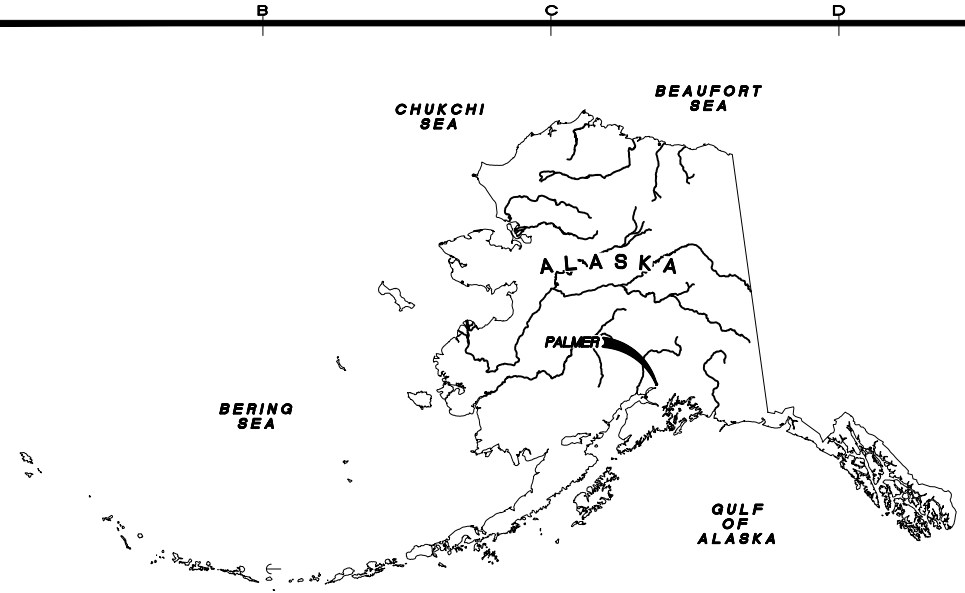
1. Sheet G1.01: DELETE the entire sheet and SUBSTITUTE the attached Sheet G1.01, which revises M2.01 and M2.02 sheet names.
2. Sheet D1.03: DELETE the entire sheet and SUBSTITUTE the attached Sheet D1.03, which adds Note 9.
3. Sheet E1.01: DELETE the entire sheet and SUBSTITUTE the attached Sheet E1.01, which revises Note 7.
4. Sheet E3.05: DELETE the entire sheet and SUBSTITUTE the attached Sheet E3.05, which includes details on raceway and wire size for the 3 luminaire poles.

END OF ADDENDUM NO. 1

WARREN "BUD" WOODS PALMER MUNICIPAL AIRPORT

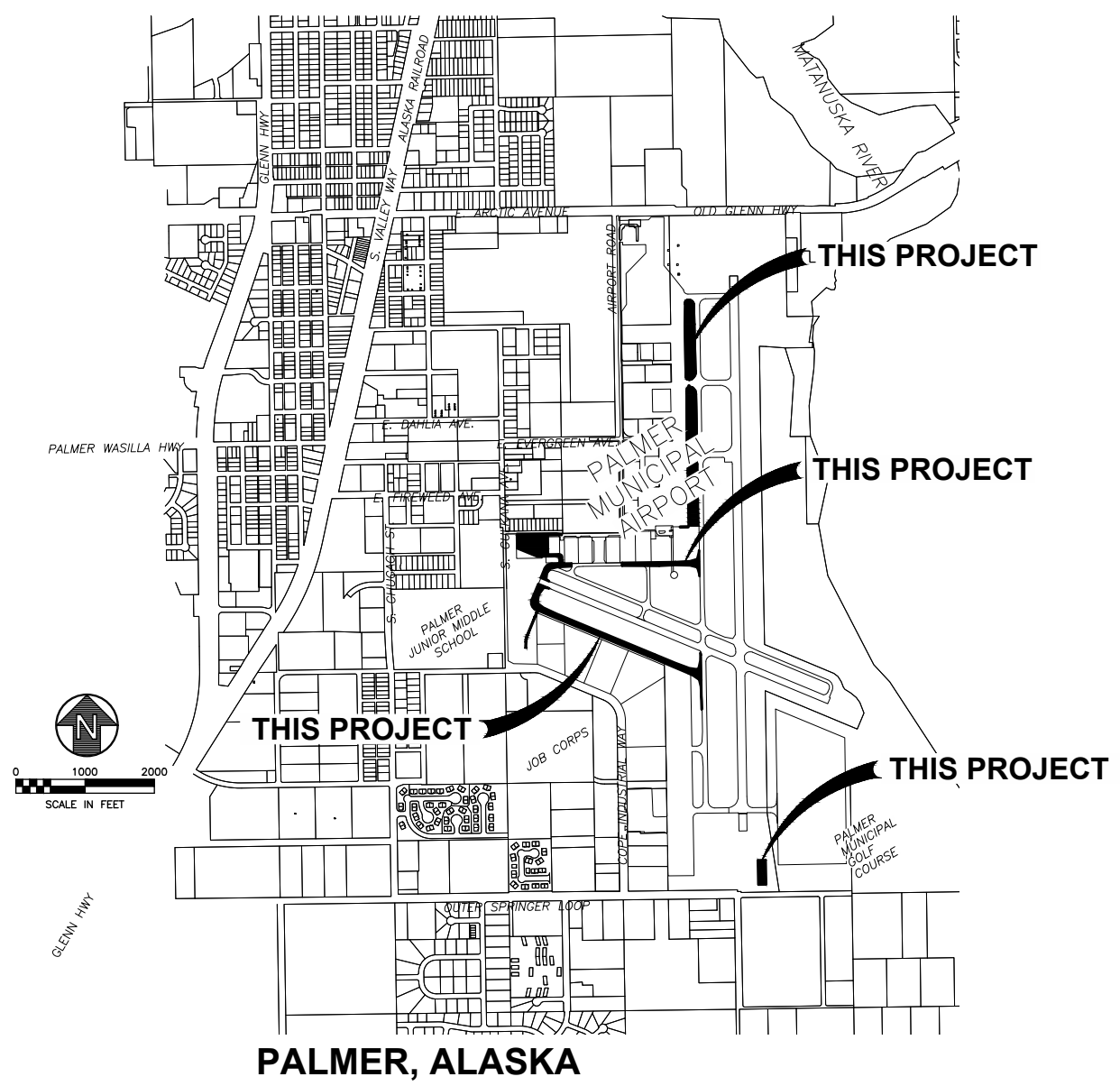
CONSTRUCT TAXIWAY N, IMPROVE AIRPORT DRAINAGE, AND CONSTRUCT APRON E

AIP NO. 03-02-0211-030-2022
AIP NO. 03-02-0211-031-2022



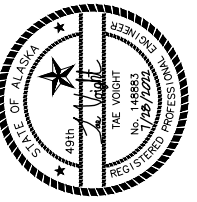
INDEX OF DRAWINGS

G1.01	COVER SHEET AND INDEX	C4.01	APRON E PLAN SITE AND GRADING PLAN
G1.02	PROJECT NOTES, ABBREVIATIONS AND LEGEND	C4.02	APRON E SECTIONS
G1.03	PROJECT LAYOUT PLAN	C5.01	STORM DRAIN DETAILS AND SIGNS
G1.04	CLEARING PLAN	C5.02	GATE DETAILS
G1.05	SURVEY CONTROL SHEET	C5.03	GATE DETAILS
G1.06	SURVEY CONTROL SHEET	M1.01	TAXIWAY N MARKING PLAN
S1.01	CSPP WORK AREA OVERALL	M1.02	TAXIWAY N MARKING PLAN
S1.02	CSPP WORK AREA 1 AND 3	M1.03	TAXIWAY J MARKING PLAN
S1.03	CSPP WORK AREA 2	M1.04	TAXIWAY J & A MARKING PLAN
S1.04	CSPP WORK AREA 4	M1.05	APRON E MARKING PLAN
S1.05	CSPP DETAILS	M2.01	TAXIWAY DESIGNATION AND STRIPING DETAILS
S1.06	CSPP NOTES AND DETAIL	M2.02	AIRPLANE TIE-DOWN STRIPING LAYOUT AND DETAILS
D1.01	SCHEDULE A REMOVAL SECTIONS	M2.03	COMPASS CALIBRATION MARKING DETAILS
D1.02	SCHEDULE A REMOVAL PLAN	E1.01	ELECTRICAL DRAWINGS ABBREVIATIONS AND LEGEND
D1.03	SCHEDULE C APRON E DEMOLITION PLAN	E2.01	ELECTRICAL DRAWINGS DEMOLITION PLAN
C1.01	TAXIWAY & ROAD TYPICAL SECTIONS	E2.02	ELECTRICAL APRON E DEMO PLAN
C1.02	TAXIWAY TYPICAL SECTIONS	E3.01	ELECTRICAL DRAWINGS TW J LIGHTING PLAN
C2.01	TAXIWAY N PLAN & PROFILE BOP TO 108+00	E3.02	ELECTRICAL DRAWINGS TW J LIGHTING PLAN
C2.02	TAXIWAY N PLAN & PROFILE 108 TO 116+50	E3.03	ELECTRICAL DRAWINGS TW N LIGHTING PLAN
C2.03	TAXIWAY N PLAN & PROFILE 116+50 TO EOP	E3.04	ELECTRICAL DRAWINGS TW N LIGHTING PLAN
C2.04	TAXIWAY J PLAN & PROFILE BOP TO EOP	E3.05	ELECTRICAL APRON E LIGHTING AND RECEPTACLES
C2.05	TAXIWAY J PLAN & PROFILE BOP TO 165+50	E4.01	ELECTRICAL DRAWINGS LIGHTING DETAILS
C2.06	TAXIWAY J PLAN & PROFILE 165+50 TO EOP	E4.02	ELECTRICAL DRAWINGS LIGHTING DETAILS
C2.07	CONSTRUCTION ACCESS PLAN & PROFILE BOP TO EOP	E4.03	ELECTRICAL DRAWINGS LIGHTING DETAILS
C3.01	TW N AT RW 10/28 GRADING & LAYOUT PLAN	E4.04	ELECTRICAL DRAWINGS LIGHTING DETAILS
C3.02	TW N AT TW A GRADING & LAYOUT PLAN	E4.05	ELECTRICAL DRAWINGS EXISTING EEB
C3.03	TW J AT RW 10/28 GRADING & LAYOUT PLAN	E4.06	ELECTRICAL DRAWINGS LIGHTING CONTROLS
C3.04	TW J AT TW A GRADING & LAYOUT PLAN	E4.07	ELECTRICAL DRAWINGS APRON LIGHTING DETAILS
C3.05	TAXILANE T GRADING PLAN APRON A-B	E4.08	ELECTRICAL DRAWINGS APRON LIGHTING DETAILS
C3.06	TAXILANE T GRADING PLAN APRON B-C	E4.09	ELECTRICAL DRAWINGS EDGE LIGHT SCHEDULES
C3.07	TAXILANE T GRADING PLAN APRON D		
C3.08	SUBGRADE INFILTRATION SYSTEM 1 PLAN		
C3.09	SUBGRADE INFILTRATION SYSTEM 1 SECTIONS		
C3.10	SUBGRADE INFILTRATION SYSTEM 2 PLAN		
C3.11	SUBGRADE INFILTRATION SYSTEM 2 SECTIONS		
C3.12	SUBGRADE INFILTRATION SYSTEM DETAILS		



H:\jobs\18-001 Palmer Airport Term (COP)\15 Taxiway N Design\CAD\Drawings\18001_15_G101_1-800_07-18-22 at 13:43 by jkk
 LAYOUT: G1_01
 VIEW: G01_F_D0800_G101_H_PDF
 XREF: 18001_15_ALP_X_PARCELS_18001_15_X_BD01

REVISIONS	MARK	DATE	DESCRIPTION
1		8/16/22	ADDENDUM NO.1
2			
3			
4			
5			

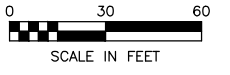
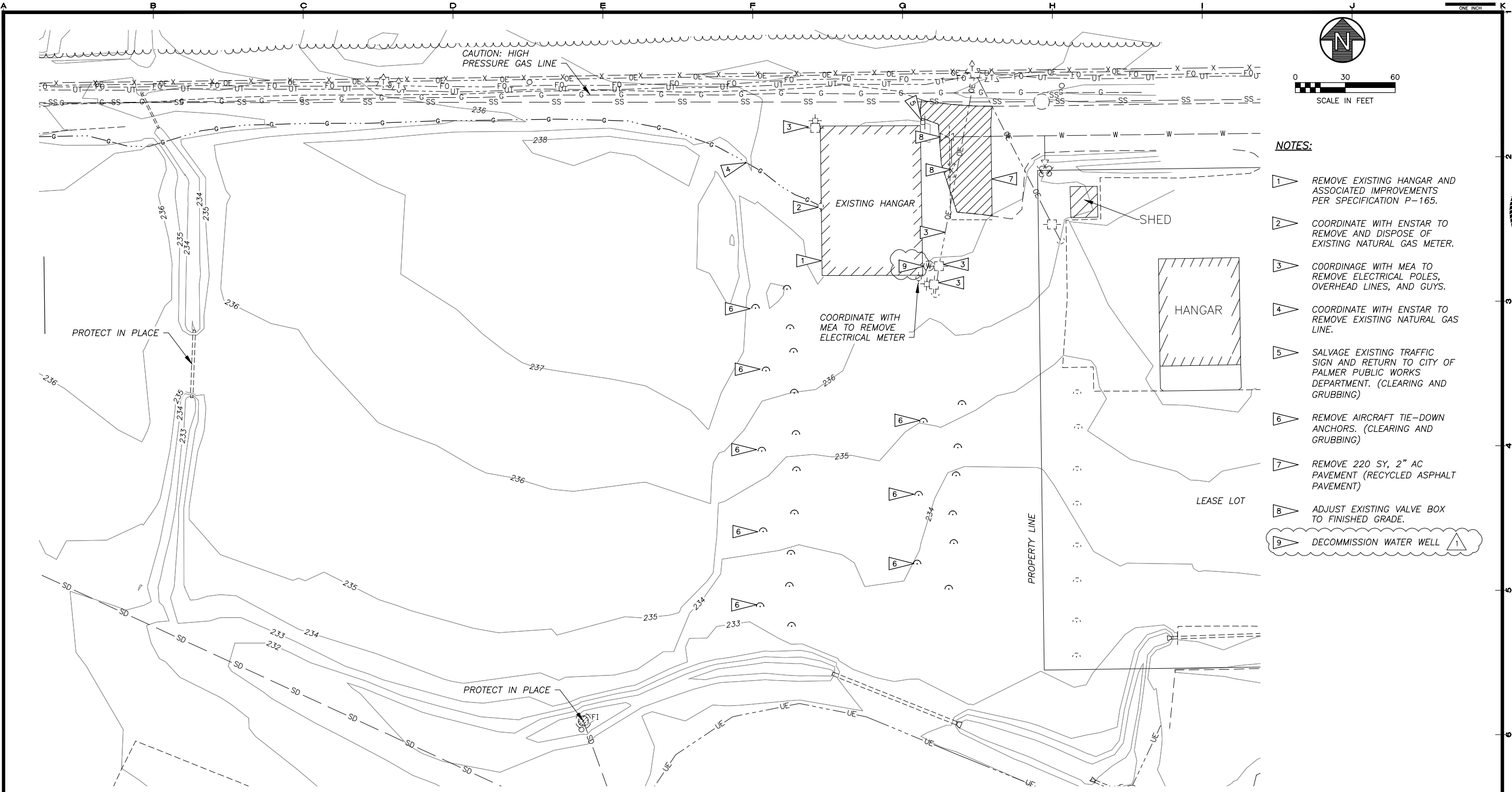


HDL ENGINEERING
Consultants LLC
 civil - geotechnical - surveying - environmental - material testing
 ANCHORAGE
 907.564.2120
 3335 Arctic Boulevard, Suite 100 Anchorage, AK 99503
 AECL861
 www.HDLalaska.com

CONSTRUCT TAXIWAY N, IMPROVE AIRPORT DRAINAGE,
 AND CONSTRUCT APRON E
WARREN "BUD" WOODS PALMER MUNICIPAL AIRPORT
 PALMER, ALASKA

SHEET TITLE	
COVER SHEET AND DRAWING INDEX	
SHEET	
G1.01	
DRAWN BY:	CHECKED BY:
CDB	DWL
DATE:	SCALE:
JULY 2022	AS NOTED
JOB NUMBER:	
18-001-15	

H:\Jobs\18-001 Palmer Airport Term (COP)\15 Taxiway N Design\CAD\Drawings\18001_15_C401-C402_1=1_07-18-22 at 12:48 by jkk
 LAYOUT: C4.01
 XREF: 18001_15_X_X01, 18001_15_X_BD01, 18001_15_X_IMAGE, 18001_15_X_SURVEYBASE, 18001_15_X_SURVEYBASE-ADD

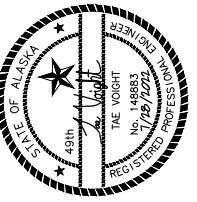


NOTES:

- 1 REMOVE EXISTING HANGAR AND ASSOCIATED IMPROVEMENTS PER SPECIFICATION P-165.
- 2 COORDINATE WITH ENSTAR TO REMOVE AND DISPOSE OF EXISTING NATURAL GAS METER.
- 3 COORDINATE WITH MEA TO REMOVE ELECTRICAL POLES, OVERHEAD LINES, AND GUYS.
- 4 COORDINATE WITH ENSTAR TO REMOVE EXISTING NATURAL GAS LINE.
- 5 SALVAGE EXISTING TRAFFIC SIGN AND RETURN TO CITY OF PALMER PUBLIC WORKS DEPARTMENT. (CLEARING AND GRUBBING)
- 6 REMOVE AIRCRAFT TIE-DOWN ANCHORS. (CLEARING AND GRUBBING)
- 7 REMOVE 220 SY, 2" AC PAVEMENT (RECYCLED ASPHALT PAVEMENT)
- 8 ADJUST EXISTING VALVE BOX TO FINISHED GRADE.
- 9 DECOMMISSION WATER WELL

1 DEMOLITION PLAN - APRON E
 D1.03 SCALE: 1" = 30'

REVISIONS	DATE	DESCRIPTION
1	8/16/22	ADDENDUM NO.1
2		
3		
4		
5		



HDL ENGINEERING
Consultants LLC
 civil - geotechnical - surveying - environmental - material testing
 ANCHORAGE
 907.564.2120
 3335 Arctic Boulevard, Suite 100 Anchorage, AK 99503
 www.HDLalaska.com
 AECL861

CONSTRUCT TAXIWAY N, IMPROVE AIRPORT DRAINAGE,
 AND CONSTRUCT APRON E
WARREN "BUD" WOODS PALMER MUNICIPAL AIRPORT
 PALMER, ALASKA

SHEET TITLE	
SCHEDULE C APRON E DEMOLITION PLAN	
SHEET	
D1.03	
DRAWN BY:	CHECKED BY:
CDB	DWL
DATE:	SCALE:
JULY 2022	AS NOTED
JOB NUMBER:	
18-001-15	

LEGEND:

EXISTING	DEMOLITION	NEW

2" HDPE CONDUIT. HASH MARKS INDICATE NUMBER OF NEW #8 AWG. 5KV AIRPORT CABLES, TYPE "C", PLUS ONE #6 BARE COPPER GROUND CONDUCTOR.

2" HDPE CONDUIT IN 4" RSC SLEEVE. HASH MARKS INDICATE NUMBER OF NEW #8 AWG. 5KV AIRPORT CABLES, TYPE "C", PLUS ONE #6 BARE COPPER GROUND CONDUCTOR.

ABBREVIATIONS:

AWG	AMERICAN WIRE GAUGE
BCU	BARE COPPER GROUND
C	CONDUIT
CBAC	CRUSHED BASE AGGREGATE COURSE
CCR	CONSTANT CURRENT REGULATOR
CSPP	CONSTRUCTION SAFETY AND PHASING PLAN
CTSBC	CEMENT TREATED SOIL BASE COURSE
CU	COPPER
DEB	DIRECT EARTH BURY
DEG	DEGREES
EEB	ELECTRICAL EQUIPMENT BUILDING (REGULATOR VAULT)
ETR	EXISTING TO REMAIN
FAA	FEDERAL AVIATION ADMINISTRATION
FT	FOOT
G	GROUND
HBO	HEADBOLT HEATER OUTLET
HDPE	HIGH DENSITY POLYETHYLENE
HIRL	HIGH INTENSITY RUNWAY LIGHTING
IN	INCH
KV	KILOVOLT
KW	KILOWATT
LED	LIGHT EMITTING DIODE
LFMC	LIQUIDTIGHT FLEXIBLE METAL CONDUIT
NRTL	NATIONALLY RECOGNIZED TESTING LABORATORY
MAX	MAXIMUM
MIN	MINIMUM
OC	ON CENTER
UON	UNLESS OTHERWISE NOTED
PCT	PERCENT
PRI	PRIMARY
REIL	RUNWAY END IDENTIFIER LIGHT
RSC	RIGID STEEL CONDUIT
RW	RUNWAY
RW(X)	RW CIRCUIT, NUMBER IN () INDICATES # OF CONDUCTORS
SCO	SERIES CUT OUT
STA	STATION
TH	THRESHOLD
TOC	TOP OF CONCRETE
TW(X)	TW CIRCUIT, NUMBER IN () INDICATES # OF CONDUCTORS
TW	TAXIWAY
TYP	TYPICAL
UON	UNLESS OTHERWISE NOTED
VASI	VISUAL APPROACH SLOPE INDICATOR
XFMR	TRANSFORMER

DEMOLITION GENERAL NOTES:

1. DECOMMISSIONED CONDUIT, CONDUCTORS, AND GROUND WIRES IN RACEWAY SHALL BE REMOVED. ABANDONED WIRING AND CONDUIT RUNS EXPOSED DURING EXCAVATION SHALL BE REMOVED. THIS WORK SHALL BE SUBSIDIARY TO EXCAVATION AND NO SEPARATE PAYMENT WILL BE MADE.
2. SIGNS, FIXTURES, TRANSFORMERS, AND CCR SHALL BE SALVAGED AND OFFERED TO THE CITY. EQUIPMENT DEEMED OF NO SALVAGE VALUE BY CITY PERSONNEL, AND ALL OTHER EQUIPMENT AND MATERIALS NOT LISTED ABOVE, INCLUDING LIGHT BASES, HANDHOLES, SIGN BASES, WIRE, RACEWAYS, LUMINARIES, POLES, AND HANGAR EQUIPMENT SHALL BECOME THE PROPERTY OF THE CONTRACTOR AND SHALL BE DISPOSED OF IN ACCORDANCE WITH FEDERAL, STATE, AND LOCAL STATUTES.
3. REMOVAL OF EXISTING CONDUCTORS AND GROUND WIRE SHALL BE SUBSIDIARY TO THE REMOVAL OF THE ASSOCIATED EQUIPMENT AND NO SEPARATE PAYMENT WILL BE MADE.
4. LOCATE EXISTING UNDERGROUND UTILITIES PRIOR TO COMMENCING WORK.

SHEET NOTES – SHEETS E1.01–E3.05:

- 1 REMOVE RUNWAY EDGE LIGHTS, THRESHOLD LIGHTS, TAXIWAY LIGHTS, BASES, TRANSFORMERS, CONDUIT, AND WIRING.
- 2 REMOVE EXISTING SIGN, CONCRETE BASE, CONDUIT, AND CONDUCTORS.
- 3 DISCONNECT, REMOVE, AND DISPOSE OF ALL LIGHTING AND ELECTRICAL EQUIPMENT NECESSARY TO DEMOLISH THE "OLD WOODS AIR" HANGAR. SUBSIDIARY TO DEMOLITION OF THE HANGAR.
- 4 COORDINATE WITH MEA TO DISCONNECT AND REMOVE SERVICE, POLE, AND UTILITY SECONDARY CONDUCTORS. SUBSIDIARY TO REMOVAL OF THE HANGAR. THE OWNER WILL TERMINATE THE SERVICE AGREEMENT AND PAY FOR ANY MEA CHARGE DIRECTLY.
- 5 DISCONNECT AND REMOVE EXISTING LUMINARIES AND WOOD POLE. SUBSIDIARY TO REMOVAL OF THE HANGAR.
- 6 PROVIDE NEW DOUBLE POLE-MOUNTED HIGH OUTPUT LED AREA/FLOOD LUMINAIRE.
- 7 CONTRACTOR TO COORDINATE WITH MEA FOR NEW UTILITY SERVICE. SUBSIDIARY TO L160.100.0000. THE OWNER WILL APPLY FOR SERVICE AND PAY ANY MEA CHARGE DIRECTLY.
- 8 CONNECT NEW CONDUIT TO EXISTING JUNCTION BOX, LIGHT BASE, OR HANDHOLE USING LISTED DEVICES. CONNECTION TO EXISTING HDPE CONDUIT SHALL BE WELDED.
- 9 CONNECT NEW #8 5KV AIRPORT CABLES AND #6 BCU TO EXISTING CONDUCTORS FOR CONTINUATION OF THE CIRCUIT. PROVIDE NEW NEOPRENE GASKET AND SEAL WASHERS.
- 10 NEW SIGN ON NEW CONCRETE BASE. NEW SIGNS SHALL BE ADB L-858(L) FAA LED LIGHT BAR AIRFIELD GUIDANCE SIGNS.
- 11 TEMPORARY JUMPERS SHALL BE INSTALLED IN HDPE CONDUIT, SIZE AS REQUIRED, MINIMUM 1-1/4". SAND BAG CONDUIT EVERY 10 FEET ON CENTER USING BLACK SAND BAGS. UTILIZE EXISTING UNDERGROUND RACEWAYS WHERE POSSIBLE. #8, 5 kv AIRPORT CABLE SHALL BE JOINED USING L-823 CONNECTORS. XHHW-2 CONDUCTORS SHALL BE JOINED USING APPROVED CRIMP CONNECTORS AND INSULATED TO 600 VOLTS MINIMUM. JUMPERS MAY BE OMITTED IF CIRCUITS CAN BE RESTORED IN ONE SHIFT, OR AS APPROVED BY THE ENGINEER.

GENERAL NOTES:

1. CONDUITS AND LIGHT BASES SHALL BE INSTALLED PRIOR TO PLACEMENT OF FINISH COURSE.
2. AIRFIELD LIGHTING CABLE SHALL BE #8 AWG, 5kv, FAA TYPE "C" AIRPORT CABLE.
3. CONNECT HDPE CONDUIT TO DISSIMILAR CONDUIT USING A LISTED TRANSITION FITTING.
4. PROVIDE LIGHT BASES WITH HUB CONFIGURATIONS TO ACCOMMODATE THE LAYOUT AS SHOWN IN THE PLANS. ROUTE CONDUIT FROM POINT TO POINT, IN A STRAIGHT LINE, EXCEPT AS REQUIRED TO AVOID AN OBSTRUCTION.
5. ALL BOLTS, NUTS, AND THREADED SURFACES SHALL BE COATED WITH ANTI-SEIZE LUBRICANT PER SPECIFICATIONS.
6. PROVIDE LIGHTNING PROTECTION COUNTERPOISE FOR ALL TAXIWAY LIGHTING CIRCUITS PER DETAIL 2/E4.02 AND 4/E4.02. #6 AWG BARE COPPER WIRE IS PAID UNDER ITEM L108.030.0006, GROUND RODS ARE PAID UNDER ITEM L108.070.0000.
7. HAND HOLE LOCATIONS MAY BE FIELD ADJUSTED AS APPROVED BY THE ENGINEER.
8. CONDUIT ROUTING SHOWN FOR CLARITY. ROUTE CONDUITS ON SHOULDER. CONDUITS THAT RUN IN CLOSE PROXIMITY MAY BE INSTALLED IN SAME TRENCH.
9. CONTRACTOR SHALL PROVIDE A LIST OF PROPOSED SPARE PARTS AND THE COST FOR EACH CATEGORY TO THE ENGINEER FOR REVIEW PRIOR TO PLACING THE ORDER FOR THE PARTS. QUANTITIES SHALL BE REDUCED IF NECESSARY UNTIL THE COSTS ARE WITHIN THE LIMITS OF THE FAA REQUIREMENTS. SEE SECTION L-125 FOR ADDITIONAL INFORMATION.
10. CONDUCTORS OF SEPARATE CIRCUITS SHALL BE IDENTIFIED BY COLORABLE INSULATION. THE COLORS GREEN AND WHITE SHALL NOT BE USED TO IDENTIFY SERIES CIRCUITS. COLOR SHALL RUN COMPLETELY THROUGH INSULATION. RUNWAY 10-28 = BLACK, RUNWAY 16-34 = RED, TAXIWAY = BLUE.
11. WORK IS SEPARATED INTO THE BID SCHEDULES LISTED BELOW.

SCHEDULE A: ALL WORK UNLESS NOTED OTHERWISE.
 SCHEDULE C: APRON FLOODLIGHTING, LOAD CENTER, AND UTILITY SERVICE.
 SCHEDULE E: ELECTRICAL FOR WEATHERPROOF OUTLETS (HBO).

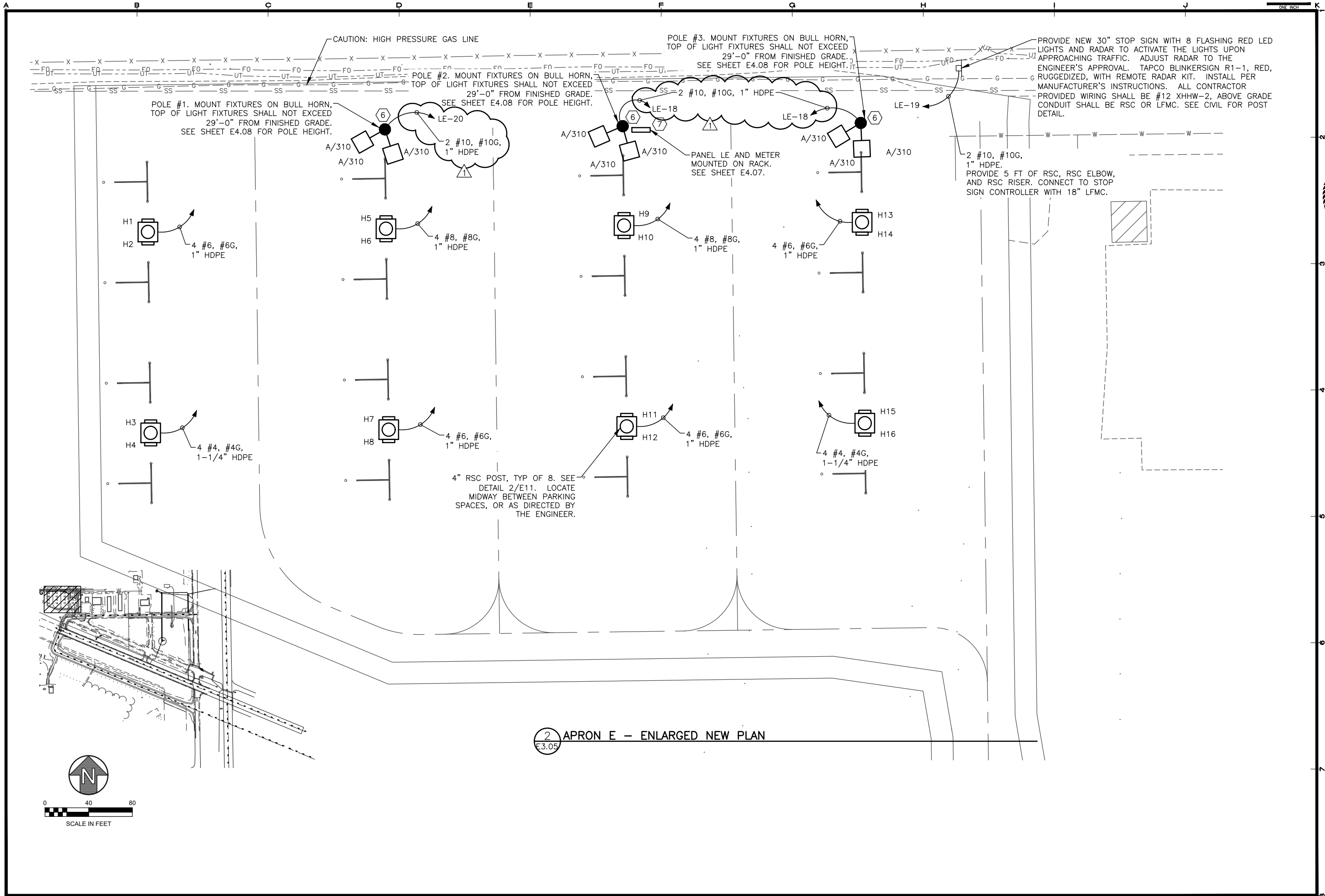
REVISIONS	DATE	DESCRIPTION
1	8/16/22	UTILITY SERVICE
2		
3		
4		
5		



MBA
 Consulting Engineers, Inc.
 (907) 274-2822 | CERT. OF AUTH. #AECC578

CONSTRUCT TAXIWAY N, IMPROVE AIRPORT DRAINAGE, AND CONSTRUCT APRON E
WARREN "BUD" WOODS PALMER MUNICIPAL AIRPORT
 PALMER, ALASKA

SHEET TITLE ELECTRICAL NOTES, LEGEND, AND ABBREVIATIONS	
SHEET E1.01	
DRAWN BY: DH	CHECKED BY: EC
DATE: JULY, 2022	SCALE: AS SHOWN
JOB NUMBER: 18-001-15	



2 APRON E - ENLARGED NEW PLAN
E3.05

REVISIONS	DATE	DESCRIPTION
1	8/15/22	LTC CONDUITS
2		
3		
4		
5		



MBA
Consulting Engineers, Inc.
(907) 274-2822 | CERT. OF AUTH. #AEC0578

CONSTRUCT TAXIWAY N, IMPROVE AIRPORT DRAINAGE,
AND CONSTRUCT APRON E
WARREN "BUD" WOODS PALMER MUNICIPAL AIRPORT
PALMER, ALASKA

SHEET TITLE	
APRON E FLOODLIGHTING, HBO RECEPTACLES, AND STOP SIGN	
SHEET	
E3.05	
DRAWN BY:	CHECKED BY:
DH	EC
DATE:	SCALE:
JULY, 2022	AS SHOWN
JOB NUMBER:	
18-001-15	